

The Graduate University for Advanced Studies, SOKENDAI

2026 – 2027

S O K E N D A I

Anthropological Studies

Japanese Studies

Japanese History

Japanese Literature

Japanese Language Sciences

Informatics

Statistical Science

Particle and Nuclear Physics

Accelerator Science

Astronomical Science

Fusion Science

Space and Astronautical
Science

Molecular Science

Materials Structure Science

Global Environmental Studies

Polar Science

Basic Biology

Physiological Sciences

Genetics

Integrative Evolutionary
Science



CONTENTS

Overview

Message from the President	4
Features of SOKENDAI	5
Research and Education System	6
Organization	7
Inter-University Research Institutes participating in SOKENDAI	8
History	10

Graduate Institute for Advanced Studies

Anthropological Studies	12
Japanese Studies	13
Japanese History	14
Japanese Literature	15
Japanese Language Sciences	16
Informatics	17
Statistical Science	18
Particle and Nuclear Physics	19
Accelerator Science	20
Astronomical Science	21
Fusion Science	22
Space and Astronautical Science	23
Molecular Science	24
Materials Structure Science	25
Global Environmental Studies	26
Polar Science	27
Basic Biology	28
Physiological Sciences	29
Genetics	30
Integrative Evolutionary Science	31



Education & Research Activities

Education & Research Grant	32
Society and Community Outreach Activities	34
Research Center for Integrative Evolutionary Science	35
The Center for Education Planning and Development (CEPD)	36
The Center for Academic Information Services	37

DATA

Data Book	38
Access	47



Message from the President

The Graduate University for Advanced Studies, SOKENDAI, is a university dedicated to the cultivation of next-generation doctoral talent through education at national research institutions known as "Inter-University Research Institutes." Since its establishment in 1988 as the first national graduate university in Japan, SOKENDAI has produced approximately 2,600 PhD graduates in various academic fields of basic research.

The Inter-University Research Institutes across our country are equipped with large-scale experimental facilities, advanced research equipment, and valuable research materials, and host leading groups of researchers. Many researchers from Japan and abroad jointly utilize these research facilities and materials, engaging in diverse collaborative research with institutional researchers. These institutions play a central role in advancing a wide range of academic fields, from the humanities to high-energy physics. A key feature of SOKENDAI is that it offers graduate education in such institutions conducting world-class cutting-edge research.

Another distinctive feature of SOKENDAI is its unique educational system. Unlike most universities in Japan, where academic organizations are divided by disciplines such as "Department of Japanese Studies, Graduate School of Humanities" or "Department of Physics, Graduate School of Science," SOKENDAI has a single educational organization called the "Graduate Institute for Advanced Studies," which offers 20 doctoral programs covering a broad range of academic fields including particle physics, materials science, life sciences, astronomy, informatics, history, and culture. The curriculum of the graduate institute is designed to allow students to acquire basic knowledge and education in their chosen field of expertise, while also providing the opportunity to engage in interdisciplinary learning and research activities beyond a single discipline. The five key competencies outlined in our Diploma Policy—"Academic expertise," "Creativity," "Broad perspective," "Global competence," and "Research integrity"—are aimed at producing doctoral professionals capable of tackling challenges beyond their area of expertise and acting as independent researchers.

Today, global society is confronted with numerous challenges, including climate change and environmental issues, poverty and inequality, and political conflicts and disputes, which are increasingly threatening society. The rapid spread of technologies, such as artificial intelligence, and how society will respond to these developments is also a major issue. In fact, it is difficult to even imagine what human society will look like in 10 years. It is precisely in such uncertain times that society needs individuals who can carry the future forward. Universities must respond to this call as centers of learning.

SOKENDAI takes a long-term perspective in envisioning the role of academia that truly contributes to human society. We, at SOKENDAI, strive to make a significant contribution to society through the nurturing of doctoral professionals who contribute to the inheritance and development of academia, which supports the intellectual foundation of society, and who are capable of creating new knowledge through advanced research and development.

April 1, 2026



NAGATA Takashi, Ph.D.

He received his Ph.D. in Chemistry from The University of Tokyo (UTokyo) in 1982. He served as Research Associate and Associate Professor at UTokyo and Institute for Molecular Science, and was appointed Professor at UTokyo in 1998. From 2013 to 2015, he served as Vice President of UTokyo. After taking early retirement in 2016, he held positions as Professor and Director at the National Institution for Academic Degrees and Quality Enhancement of Higher Education, and later as Executive Vice President at SOKENDAI. He has held his current position since 2023.

Nagata, Takashi Ph.D.
President
The Graduate University for Advanced Studies, SOKENDAI

A stylized, handwritten signature of Nagata Takashi in black ink. The signature is written in a cursive, flowing style, with the first letter 'N' being particularly large and prominent.

Purpose of Establishment

The Graduate University for Advanced Studies, SOKENDAI, was founded in 1988 as the first National graduate university in Japan with the principle of contributing to the creation and development of culture through education and research in academic theory and application. As a world-class international graduate university, SOKENDAI operates in close partnership and collaboration with the inter-university research institutes (parent institutes). Based on this principle, SOKENDAI aims to foster researchers with broad perspectives and advanced research capabilities that are globally accepted in fundamental academic fields. It promotes international academic research extending beyond the borders of traditional academic fields through interdisciplinary fusion and pioneers new interdisciplinary and cutting-edge fields of study.

Inter-University Research Institutes

The inter-university research institutes (parent institutes) provide researchers with research resources that individual universities cannot afford, such as large-scale facilities and equipment, vast amounts of data and valuable materials. They serve as the core center established for shared usage and collaborative research that considers the demands of researchers in the relevant fields, as well as research bases that lead cutting-edge academic research in Japan through diverse collaborative research with researchers in Japan and around the world. SOKENDAI provides advanced specialized education and research guidance by leveraging the excellent research environment provided by its parent institutes as a place for education, with the faculty consisting of a rich pool of researchers from various fields.

Features of SOKENDAI

SOKENDAI has 20 programs in collaboration with the inter-university research institutes (parent institutes) under Graduate Institute for Advanced Studies. This provides an educational environment transcending academic boundaries and flexibly offering the diverse educational resources of the inter-university research institutes. SOKENDAI fosters independent researchers with “Advanced Specialty and Expertise”, “Broad Perspective” and “International Competitiveness” backed by five competencies.

Five Competencies

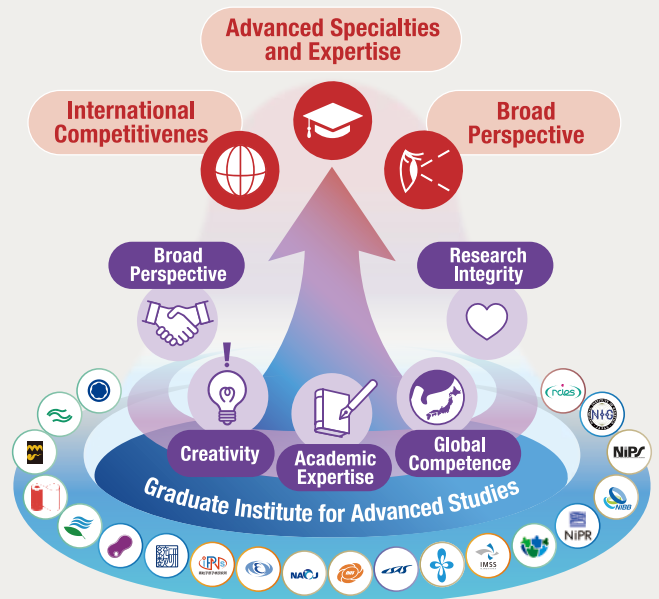
Academic Expertise to promote advanced research with leveraging collective expertise in a specialized field.

Creativity to tackle new challenges with an innovative idea backed by well-founded academic knowledge and strategies, and to create new academic values.

Broad Perspective to expand into interdisciplinary fields to proactively address the broader issues of interest to the global community by using his/her specialized expertise.

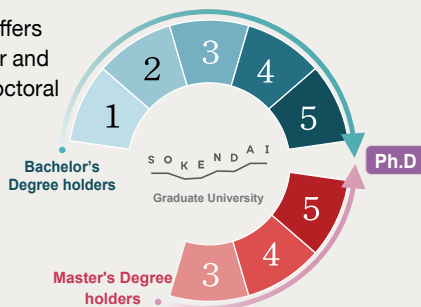
Global Competence to achieve a research outcome at a high level of global competitiveness by developing mutual understanding and cooperation across barriers of nationality, language, culture, gender, religion, etc.

Research Integrity to conduct himself/herself appropriately as a responsible researcher possessing accountability for his/her own research outcome, with recognizing the significance and role of academic research in society.



Doctoral program

SOKENDAI offers both five-year and three-year doctoral program.



Student support

Financial support

SOKENDAI financially supports excellent students' research activities through the Research Assistant System, the Tuition Waiver System, and the SOKENDAI Special Researcher Program.

Research Dispatch Support

SOKENDAI supports excellent students who engage in long-term joint research activities in Japan and abroad through the SOKENDAI Student Dispatch Program and the SOKENDAI Dual Degree Program.

For more information, please click the URL

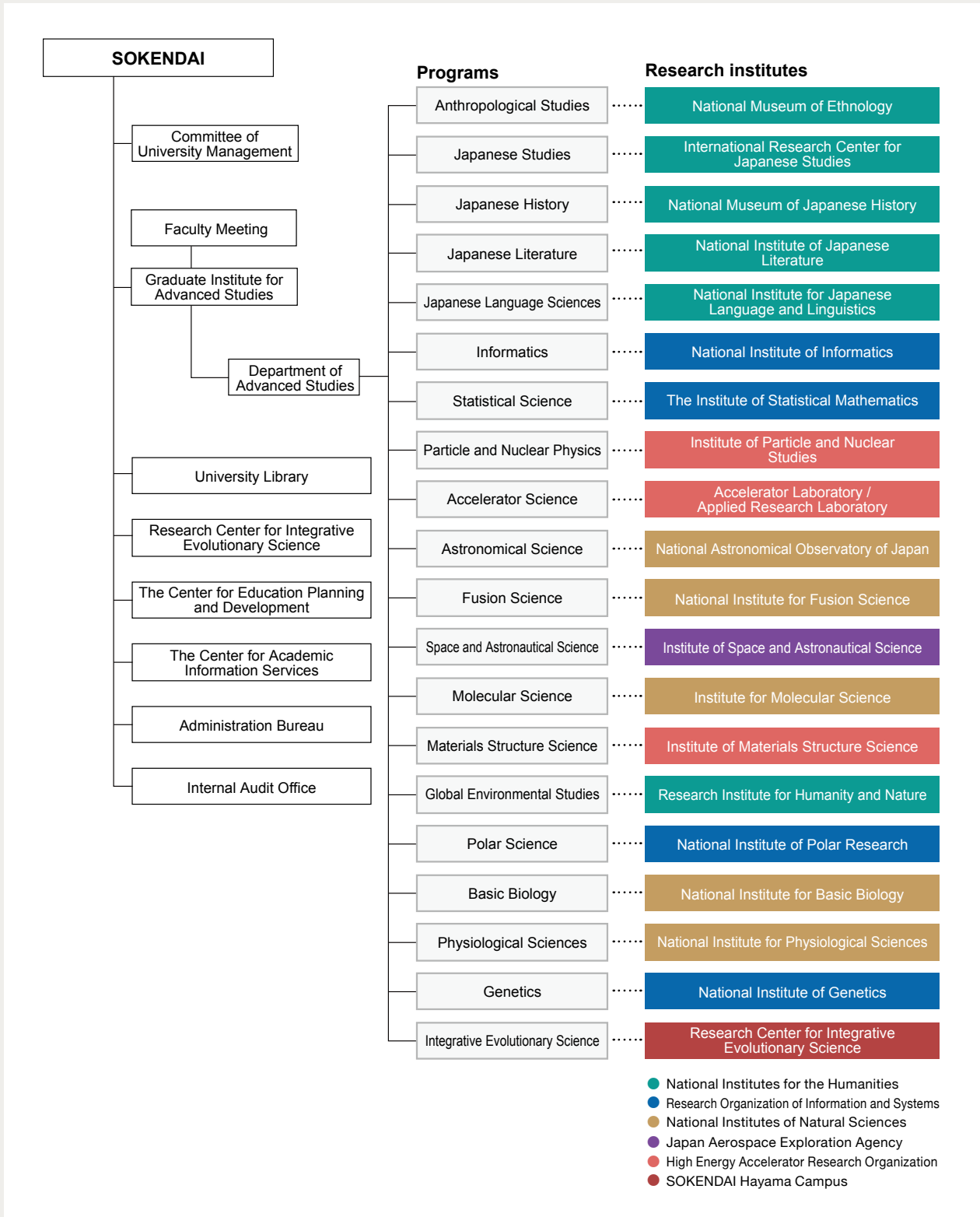
<https://www.soken.ac.jp/en/features/>



Research and Education System

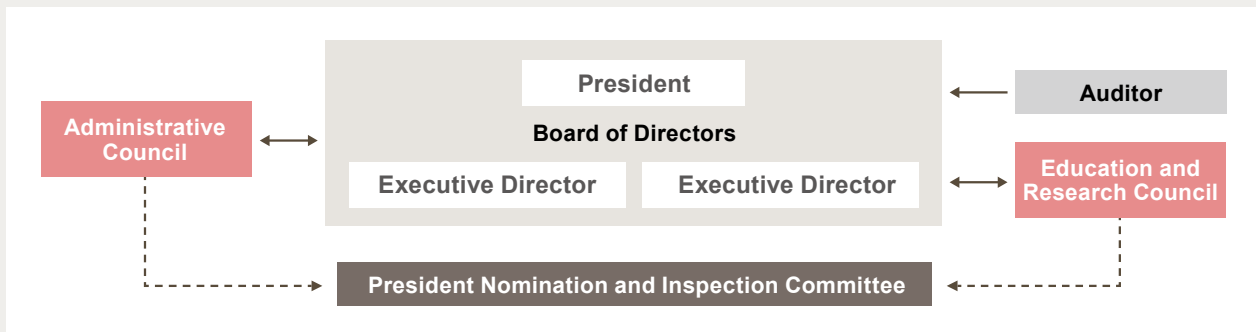
SOKENDAI has established the Graduate Institute for Advanced Studies as a basic educational and research organization equivalent to a graduate school. The Graduate Institute for Advanced Studies has 20 programs with a wide variety of specialties, which are developed in the research environment of four Inter-University Research Institute Corporations and Japan

Aerospace Exploration Agency. In addition, the University Library, the Research Center for Integrative Evolutionary Science, The Center for Education Planning and Development and The Center for Academic Information Services have been established as university-wide facilities.



Organization

As of April 1, 2026



Administrative Board

President	NAGATA Takashi
Executive Director	YAMAMOTO Satoshi
Executive Director	KURUSHIMA Noriko
Auditor	HISABORI Toru
Auditor	TANAKA Teruhiko
	(The above are corporate members)
Vice President	YAMAMOTO Satoshi
Vice President	KURUSHIMA Noriko
Executive Officer	ARIKAWA Kentaro
Executive Officer	KUNINAKA Hitoshi
Executive Officer	FUJISAWA Hironori
President's Assistant	MICHIZONO Shinichiro

Graduate Institute for Advanced Studies

Dean, Graduate Institute for Advanced Studies	SAKAKIBARA Satoru
Chair, Anthropological Studies	MARUKAWA Yuzo
Chair, Japanese Studies	ZHAN Xiaomei
Chair, Japanese History	SAKAMOTO Minoru
Chair, Japanese Literature	NISHIMURA Shintaro
Chair, Japanese Language Sciences	ISHIGURO Kei
Chair, Informatics	GOSHIMA Masahiro
Chair, Statistical Science	NINOMIYA Yoshiyuki
Chair, Particle and Nuclear Physics	MIHARA Satoshi
Chair, Accelerator Science	MIURA Takako
Chair, Astronomical Science	NAMIKI Noriyuki
Chair, Fusion Science	SAKAKIBARA Satoru
Chair, Space and Astronautical Science	YAMADA Toru
Chair, Molecular Science	MATSUI Fumihiko
Chair, Materials Structure Science	KUMAI Reiji
Chair, Global Environmental Studies	KONDO Yasuhisa
Chair, Polar Science	HOKADA Tomokazu
Chair, Basic Biology	NIIMI Teruyuki
Chair, Physiological Sciences	FURUSE Mikio
Chair, Genetics	SAITO Kuniaki
Chair, Integrative Evolutionary Science	KUTSUKAKE Nobuyuki

University Library

Director	KURUSHIMA Noriko
----------	------------------

Research Center for Integrative Evolutionary Science

Director	IRIE Naoki
----------	------------

The Center for Education Planning & Development

Director	YAMAMOTO Satoshi
----------	------------------

The Center for Academic Information Services

Director	KURUSHIMA Noriko
----------	------------------

Administration Bureau

Secretary-General	YAMAJI Naotake
Manager, General Planning Division	OGASAWARA Yoshihito
Manager, General Affairs Division	ASADA Yoshimi
Manager, Financial Affairs Division	YAGI Yuichiro
Manager, Academic and Students Affairs Division	NAKAJIMA Naoya

Education and Research Council

President	NAGATA Takashi
Executive Director (Vice President)	YAMAMOTO Satoshi

Executive Director (Vice President)	KURUSHIMA Noriko
Dean, Graduate Institute for Advanced Studies	SAKAKIBARA Satoru
Chair, Anthropological Studies	MARUKAWA Yuzo
Chair, Japanese Studies	ZHAN Xiaomei
Chair, Japanese History	SAKAMOTO Minoru
Chair, Japanese Literature	NISHIMURA Shintaro
Chair, Japanese Language Sciences	ISHIGURO kei
Chair, Informatics	GOSHIMA Masahiro
Chair, Statistical Science	NINOMIYA Yoshiyuki
Chair, Particle and Nuclear Physics	MIHARA Satoshi
Chair, Accelerator Science	MIURA Takako
Chair, Astronomical Science	NAMIKI Noriyuki
Chair, Fusion Science	SAKAKIBARA Satoru
Chair, Space and Astronautical Science	YAMADA Toru
Chair, Molecular Science	MATSUI Fumihiko
Chair, Materials Structure Science	KUMAI Reiji
Chair, Global Environmental Studies	KONDO Yasuhisa
Chair, Polar Science	HOKADA Tomokazu
Chair, Basic Biology	NIIMI Teruyuki
Chair, Physiological Sciences	FURUSE Mikio
Chair, Genetics	SAITO Kuniaki
Chair, Integrative Evolutionary Science	KUTSUKAKE Nobuyuki

Administrative Council

President	NAGATA Takashi
Executive Director (Vice President)	YAMAMOTO Satoshi
Executive Director (Vice President)	KURUSHIMA Noriko
Professor, Program of Genetics	
Director-General, National Institute of Genetics	KONDO Shigeru
Professor, Program of Particle and Nuclear Physics	
Director, Institute of Particle and Nuclear Studies	SAITO Naohito
Professor, Program of Japanese Literature	
Director General, National Institute of Japanese Literature	WATANABE Yasuaki
Professor, Program of Molecular Science	
Director General, Institute for Molecular Science	WATANABE Yoshihito
Managing Director & Senior Partner, The Boston Consulting Group K.K.	AKIIKE Reiko
Director General, High Energy Accelerator Research Organization	ASAI Shoji
Outside Director, Japan Post Bank	AMANO Reiko
President, Eikei University of Hiroshima	ARINOBU Mutsuhiro
President, Hanazono University	ISODA Fumio
Auditor, National Institutes for the Humanities	INOSE Kumie
President, National Institutes of Natural Sciences	KAWAI Maki
President, Research Organization of Information and Systems	KITSUREGAWA Masaru
President, National Institutes for the Humanities	KIBE Nobuko
Senior Corporate Adviser, Mitsubishi Estate Co., Ltd.	KIMURA Keiji
Representative Director & President, President, RiseWaveKei LLC	SEKINE Chizu
President, Akita Prefectural University	FUKUDA Hiroo
Executive Director, Institute of Space and Astronautical Science, Japan Aerospace Exploration Agency	FUJIMOTO Masaki
President, Akita International University	MONTE Cassim
Senior counselor, Japan Organization for Metals and Energy Security	
Professor Emiritus, Tokyo University	YAMATO Hiroyuki

Inter-University Research Institutes participating in SOKENDAI

SOKENDAI ①

The Center for Education Planning and Development
The Center for Academic Information Services • University Library
Shonan Village, Hayama, Kanagawa, 240-0193 Japan
TEL: +81-46-858-1500
URL: <https://www.soken.ac.jp/en/>

Research Center for Integrative Evolutionary Science

Integrative Evolutionary Science
TEL: +81-46-858-1577 (RCIES admin.office)
URL: <https://rcies.soken.ac.jp/>

Tokyo Office ②

KYOSO STUDIO Tokyo
6th Floor, Yaesu Kagawa Building,
1-5-17 Yaesu, Chuo-ku, Tokyo
103-0028 Japan

National Institutes for the Humanities National Museum of Ethnology ③

Anthropological Studies
10-1 Senri Expo Park, Suita, Osaka, 565-8511 Japan
TEL: +81-6-6878-8236
URL: <https://www.minpaku.ac.jp/>

National Institutes for the Humanities International Research Center for Japanese Studies ④

Japanese Studies
3-2 Oeyama-cho, Goryo, Nishikyo-ku, Kyoto, 610-1192 Japan
TEL: +81-75-335-2222
URL: <https://www.nichibun.ac.jp/en/>

National Institutes for the Humanities National Museum of Japanese History ⑤

Japanese History
117 Jonai-cho, Sakura-shi, Chiba, 285-8502 Japan
TEL: +81-43-486-0123
URL: <https://www.rekihaku.ac.jp/>

National Institutes for the Humanities National Institute of Japanese Literature ⑥

Japanese Literature
10-3, Midori-cho, Tachikawa, Tokyo, 190-0014 Japan
TEL: +81-50-5533-2900
URL: <https://www.nijl.ac.jp/en/>

National Institutes for the Humanities National Institute for Japanese Language and Linguistics ⑦

Japanese Language Sciences
10-2 Midori-cho, Tachikawa City, Tokyo, 190-8561 Japan
TEL: +81-570-08-8595
URL: <https://www.ninjal.ac.jp/english/>

National Institutes for the Humanities Research Institute for Humanity and Nature ⑧

Global Environmental Studies
1457-4 Motoyama, Kamigamo, Kita-ku, Kyoto, 603-8047 Japan
TEL: +81-75-707-2148
URL: https://www.chikyuu.ac.jp/rihn_e/

National Institutes of Natural Sciences Institute for Molecular Science ⑨

Molecular Science
38 Nishigonaka, Myodaiji, Okazaki, 444-8585 Japan
TEL: +81-564-55-7000
URL: <https://www.ims.ac.jp/en/>

National Institutes of Natural Sciences National Institute for Basic Biology ⑩

Basic Biology
38 Nishigonaka, Myodaiji, Okazaki, 444-8585 Japan
TEL: +81-564-55-7000
URL: <https://www.nibb.ac.jp/en/>

National Institutes of Natural Sciences National Institute for Physiological Sciences ⑪

Physiological Sciences
38 Nishigonaka, Myodaiji, Okazaki, 444-8585 Japan
TEL: +81-564-55-7000
URL: <https://www.nips.ac.jp/eng/>

National Institutes of Natural Sciences National Astronomical Observatory of Japan ⑫

Astronomical Science
2-21-1 Osawa, Mitaka, Tokyo, 181-8588 Japan
TEL: +81-422-34-3600
URL: <https://www.nao.ac.jp/en/>

NAOJ Mizusawa campus ⑬

2-12 Hoshigaoka, Mizusawa, Oshu, Iwate, 023-0861 Japan
TEL: +81-197-22-7111

Nobeyama Radio Observatory ⑭

462-2 Nobeyama, Minamimakimura, Minamisaku, Nagano, 384-1305 Japan
TEL: +81-267-98-4300

Subaru Telescope ⑮

650 North A'ohoku Place, Hilo, Hawaii 96720 U.S.A.
TEL: +1-808-934-7788

NAOJ Chile Observatory ⑯

Los Abedules 3085, Oficina 701, Vitacura, Santiago, Chile
TEL: +56-2-2656-9253

National Institutes of Natural Sciences National Institute for Fusion Science ⑰

Fusion Science
322-6, Oroshi-cho, Toki, Gifu, 509-5292 Japan
TEL: +81-572-58-2222 or 2042
URL: <https://www.nifs.ac.jp/en/>

NIFS Rokkasho Research Center ⑱

Inside the QST Rokkasho Institute for Fusion Energy,
2-166 Oaza-Obuchi-Aza-Omotodate, Rokkasho-mura, Kamikita-gun, AOMORI 039-3212 Japan
URL: <https://www.nifs.ac.jp/en/>

Japan Aerospace Exploration Agency Institute of Space and Astronautical Science ⑲

Space and Astronautical Science
3-1-1, Yoshinodai, Chuo-ku, Sagami-hara, Kanagawa, 252-5210 Japan
TEL: +81-42-759-8012
URL: <https://www.isas.jaxa.jp/en/>

High Energy Accelerator Research Organization Tsukuba Campus ⑳

 Accelerator Laboratory • Applied Research Laboratory
Accelerator Science
<https://www2.kek.jp/accl/eng/>
<https://www2.kek.jp/arll/en/home-en/>

Institute of Materials Structure Science

Materials Structure Science
<https://www2.kek.jp/imss/eng/>

Institute of Particle and Nuclear Studies

Particle and Nuclear Physics
<https://soken-pnp.kek.jp/en/>

1-1 Oho, Tsukuba, Ibaraki, 305-0801 Japan
TEL: +81-29-864-1171 or 5128
URL: <http://www.kek.jp/>

Tokai Campus ㉑

203-1 Shirakata, Tokai, Ibaraki, 319-1106, Japan

Research Organization of Information and Systems The Institute of Statistical Mathematics ㉒

Statistical Science
10-3 Midori-cho, Tachikawa, Tokyo, 190-8562 Japan
TEL: +81-50-5533-8500
URL: https://www.ism.ac.jp/index_e.html

Research Organization of Information and Systems National Institute of Polar Research ㉓

Polar Science
10-3 Midori-cho, Tachikawa, Tokyo, 190-8518 Japan
TEL: +81-42-512-0612
URL: <https://www.nipr.ac.jp/>

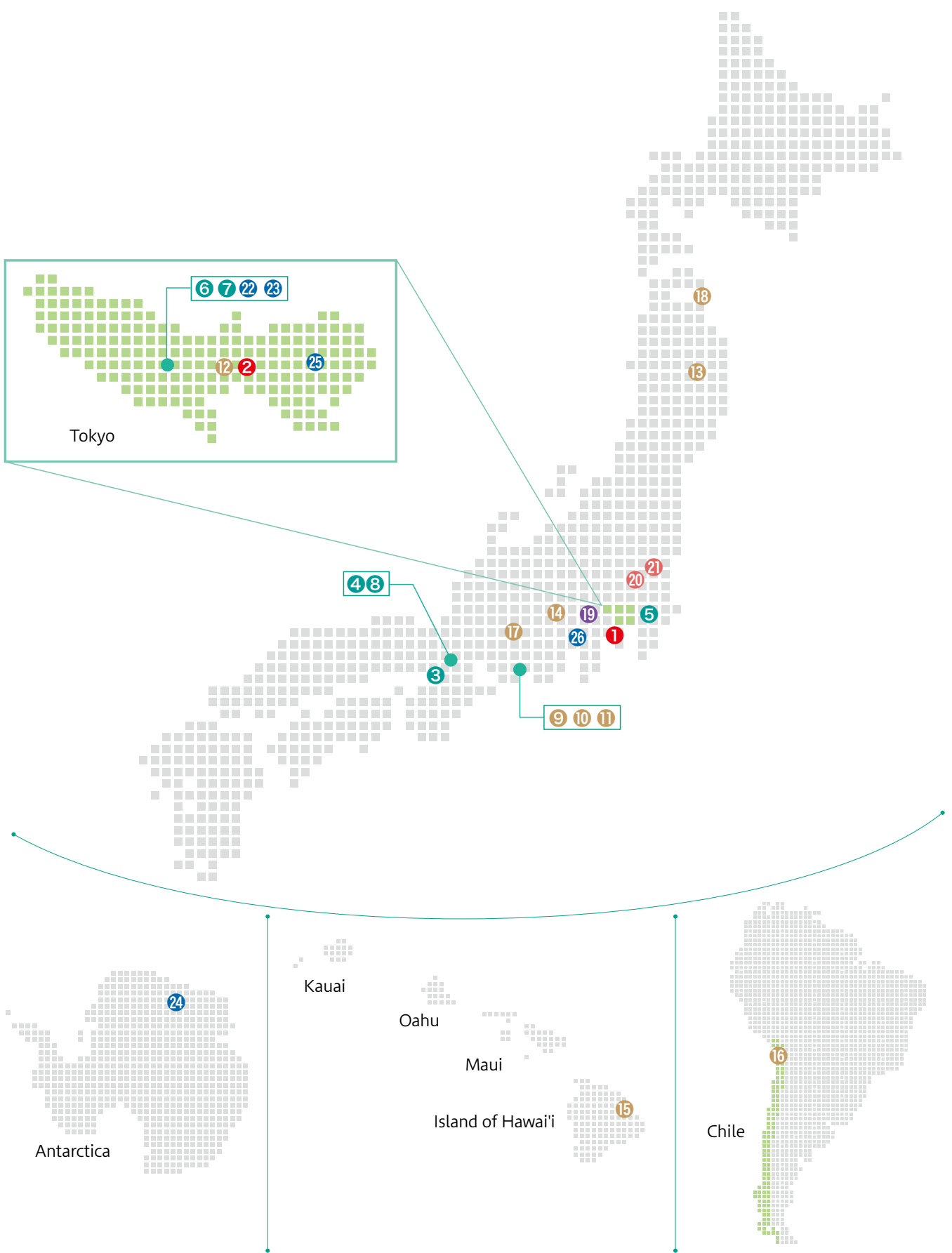
Syowa Station (Antarctica) ㉔

Research Organization of Information and Systems National Institute of Informatics ㉕

Informatics
2-1-2 Hitotsubashi, Chiyoda-ku, Tokyo, 101-8430 Japan
TEL: +81-3-4212-2110
URL: <https://www.nii.ac.jp/en/>

Research Organization of Information and Systems National Institute of Genetics ㉖

Genetics
1111 Yata, Mishima, Shizuoka, 411-8540 Japan
TEL: +81-55-981-6720
URL: <https://www.nig.ac.jp/>



(C) NIPR



(C) NAOJ



(C) NAOJ

An informal committee of the directors general of international university research institutes issues an appeal for the introduction of post-graduate courses in the institutes.

June 1982

An informal committee of the directors general of inter-national university research institutes produces a summary of the basic concepts of a postgraduate school for advanced studies based on the results of an investigation by a working group set up to investigate issues related to postgraduate schools. An Office and Committee for the Investigation of the Preparation of the Establishment of a Postgraduate School for Advanced Studies are established at Okazaki National Research Institutes.

April 1986

The Committee for the Investigation of the Preparation of the Establishment of a Postgraduate School for Advanced Studies produces a summary of the basic concepts of a postgraduate school for advanced studies.

March 1987

An Office and Committee for Preparation of the Establishment of a Postgraduate School for Advanced Studies are established at Okazaki National Research Institute.

May

The Committee for Preparation of the Establishment of a Postgraduate School for Advanced Studies produces an interim summary on the preparation of the establishment of a tentatively named Graduate University for Advanced Studies.

July

An Office and Committee for Preparation of the Establishment of the Graduate University for Advanced Studies are established at Okazaki National Research Institute.

April 1988

The "Law to amend part of the National School Establishment Law" (Law No. 63, 1988), which stipulates the establishment of the Graduate University for Advanced Studies, is announced and enacted.

May

The Committee for Preparation of the Establishment of the Graduate University for Advanced Studies produces a summary of the preparation of the establishment of the Graduate University for Advanced Studies.

September

The Graduate University for Advanced Studies is inaugurated. The central administration office is established at the Tokyo Institute of Technology (now Institute of Science Tokyo) Nagatsuda Campus.

October

School of Mathematical and physical Science
 •Department of Statistical Science
 •Department of Accelerator Science
 •Department of Scynchrotron Radiation Science
 •Department of Structural Molecular Science
 •Department of Functional Molecular Science
 (The university commences matriculation from April 1989.)

School of Life Science

- Department of Genetics
- Department of Molecular Biomechanics
- Department of Physiological Science

Dr.Saburo Nagakura is appointed as the first President of the University.

**Establishment of university**

Saburo Nagakura, the first president of SOKENDAI, hangs the SOKENDAI sign in a rented room at the Tokyo Institute of Technology (now Institute of Science Tokyo) Nagatsuda Campus. 1988. 10. 1

The School of Cultural and Social Studies is established with the Department of Regional Studies and Department of Comparative Studies. The University commences matriculation of students for the three schools.

April 1989

Dr.Eizi Hirota is appointed as the first Vice President of the University.

January 1990

The Coordination Center for Research and Education is established.

April 1991

The Department of Japanese Studies (School of Cultural and Social Studies), and the Departments of Astronomical Science and Fusion Science (School of Mathematical and Physical Science) are established; matriculation begins.

April 1992

The Department of Polar Science (School of Mathematical and Physical Science) is established; matriculation begins.

April 1993

Land in Hayama, Kanagawa (27,000m²), is donated by Mitsui Fudosan Ltd. to allow the construction of the University's central administration office, as a result of the mediation services of the Kanagawa prefectural government.

February 1994

Construction of the central administration office (4,205m²) begins at the Hayama Campus.

March

The Information Center for Research and Education is established.

June

Administrative functions are transferred from Nagatsuda Campus to Hayama; construction is completed on the central administration building.

February 1995

Dr.Eizi Hirota is appointed as the second President.
 Dr.Kazuo Moriwaki is appointed as the second Vice President.

April

The School of Advanced Sciences, with the Department of Biosystems Science, is established at the Hayama Campus (matriculation begins in April 1999).

April 1997

The Department of Photoscience (School of Advanced Sciences) is established (matriculation begins in April 1999). The Department of Synchrotron Radiation Science changes its name to "The Department of Materials Structure Science".

April 1998

Construction of the School of Advanced Sciences building for research (3,060m²), begins at the Hayama Campus.

September

The School of Cultural Studies changes its name to "The School of Cultural and Social Studies". The Department of Japanese History is established in the School of Cultural and Social Studies, and The Department of Particle and Nuclear Physics is established in the School of Mathematical and Physical Science; matriculation begins in both new Departments. The School of Advanced Sciences commences matriculation.

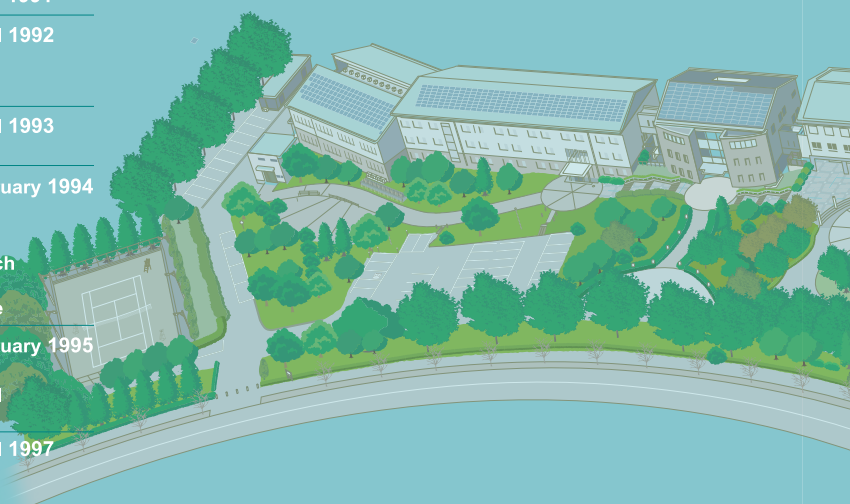
April 1999

Construction completed on the research building for the School of Advanced Sciences.

June

History

1982



S O K E N D A I

2026

History of SOKENDAI Presidents

The 1st President **Saburo, Nagakura (DSc)**
Oct.1988 to Mar.1995

The 2nd President **Eizi, Hirota (DSc)**
Apr.1995 to Mar.2001

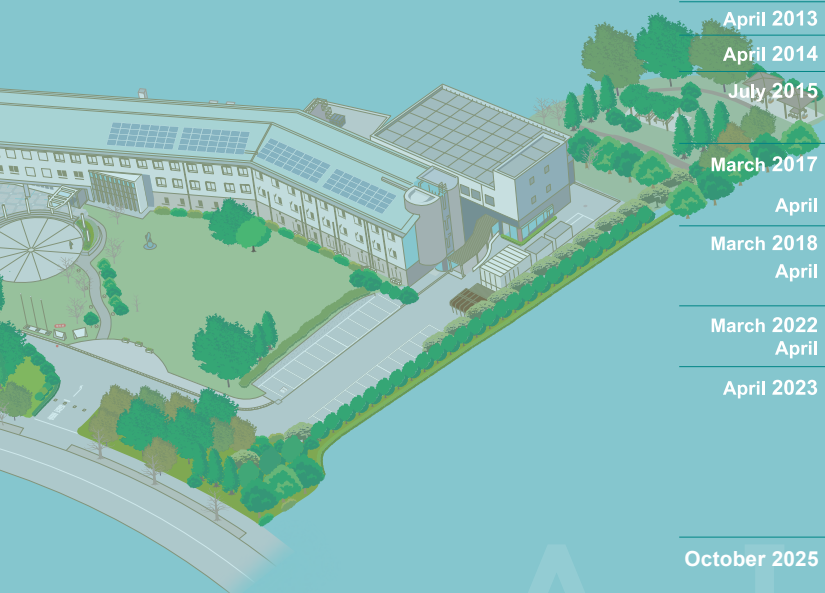
The 3rd President **Keiichi, Kodaira (DSc)**
Apr.2001 to Mar.2008

The 4th President **Naoyuki, Takahata (DSc)**
Apr.2008 to Mar.2014

The 5th President **Yasunobu, Okada (MB)**
Apr.2014 to Mar.2017

The 6th President **Mariko, Hasegawa (DSc)**
Apr.2017 to Mar.2023

The 7th President **Takashi, Nagata (DSc)**
Apr.2023 to present



April 2001	Dr.Keiichi Kodaira is appointed as the third President. Dr.Naoyuki Takahata is appointed as the third Vice President. The Department of Cyber Society and Culture (School of Cultural and Social Studies) is established; matriculation begins.
July	Construction begins on the Hayama Campus Library (1,427m ²).
February 2002	Library construction completed.
April	The Department of Informatics established in the School of Mathematical and Physical Science; matriculation begins.
April 2003	The Department of Japanese Literature (School of Cultural and Social Studies), and the Department of Space and Astronautical Science (School of Mathematical and Physical Science) are established; matriculation begins.
October	"The National University Corporation Law (Law No. 112 of 2003)" is promulgated and enforced.
April 2004	Reformation into the National University Corporation, Graduate University for Advanced Studies Dr. Sc. Keiichi Kodaira is reappointed as the President of the University.The School of Mathematical and Physical Science is reformed into three schools: the School of Physical Science (including the departments of Structural Molecular Science, Functional Molecular Science, Astronomical Science, Fusion Science and Space and Astronautical Science), the School of High Energy Accelerator Science (including the departments of Accelerator Science, Materials Structure Science, Particle and Nuclear Physics), and the School of Multidisciplinary Science (including the departments of Statistical Science, Polar Science and Informatics). The School of Life Science has reformed a three-year doctoral program into a five-year doctoral program.
April 2005	The name of the Department of Molecular Biomechanics at the School of Life Science has changed to the Department of Basic Biology.
April 2006	The School of Physical Sciences, the School of High Energy Accelerator Science, and the School of Multidisciplinary Sciences have implemented the five-year doctoral program system. The Schools have begun to accept students.
April 2007	The School of Advanced Sciences is reorganized to establish the Department of Evolutionary Studies of Biosystems (providing a five-year doctoral program), in stead of its two existing departments, the Department of Biosystems Science and the Department of Photo Science (providing three-year doctoral programs), matriculation begins.
April 2008	Dr. Naoyuki Takahata has been appointed as the fourth President.
April 2009	The Department of Cyber Society and Culture has stopped accepting new students.
March 2010	Construction of the Center for the Promotion of Integrated Sciences (1,033m ²) begins at the Hayama Campus.
April	The name of Hayama Center for Advanced Studies has changed to the Center for the Promotion of Integrated Sciences.
January 2011	Construction of the Center for the Promotion of Integrated Sciences is completed.
April 2013	Information Services and Technology Center is established.
April 2014	Dr.Yasunobu Okada has been appointed as the fifth President.
July 2015	The Center for Academic Information Services is established by unification of the University Library and the Information Services and Technology Center.
March 2017	Department of Cyber Society and Culture abolished. (Dept. operation period from 2001.4.1 to 2017.3.31)
April	Dr. Mariko Hasegawa has been appointed as the sixth President.
March 2018	The Center for Educational Development is established.
April	The Center for the Promotion of Integrated Sciences is abolished. SOKENDAI Tokyo Branch is established (Minato-ku, Tokyo)
March 2022	Tokyo branch abolished.
April	Research Center for Integrative Evolutionary Science is established.
April 2023	Dr.Takashi Nagata has been appointed as the seventh President. Graduate Institute for Advanced Studies is established, matriculation begins. The Center for Educational Development is reorganized to establish The Center for Educational Planning Development. School of Cultural and Social Studies, School of Physical Science, School of High Energy Accelerator Science, School of Multidisciplinary Science, School of Life Sciences, School of Advanced Sciences abolished.
October 2025	The Tokyo office is established (Chuo-ku, Tokyo)



Anthropological Studies

National Museum of Ethnology
National Institutes for the Humanities

Program Outline

Three-year doctoral program
Doctor of philosophy



Chair

MARUKAWA
Yuzo

A distinctive feature of the program is the production of a doctoral thesis with an ethnographic description based on fieldwork, irrespective of the region or theme under research. We want students to be generalists with knowledge of a wide range of cultural phenomena, as well as specialists in a particular region or theme. To this end, students can make use not only of the program's lectures and seminars but also of the museum's resources, research projects, academic conferences, exhibitions, and lectures for general visitors, performances, and film shows.

The Anthropological Studies Program offered at the National Museum of Ethnology provides education and research on the diverse cultures that humans have developed in different parts of the world from prehistoric times to the present. From the perspectives of cultural anthropology, ethnology, and related disciplines, the program conducts ethnographic research that describes and analyzes particular cultures, as well as cross-cultural research that compares cultures from specific viewpoints. Students pursue their research with the aim of completing a doctoral dissertation, making use of

data obtained through fieldwork as well as the collections of the National Museum of Ethnology, including artifacts, visual and audio materials, and documentary resources. This program consists solely of a doctoral course (the latter stage of the doctoral program) and admits students who have obtained a master's degree or who are recognized as having academic ability equivalent to or higher than that level. Students enrolled in the program carry out their study and research activities at the National Museum of Ethnology, located in Suita City, Osaka.



Handcrafted cotton textiles by members of Owari Momen Denshokai weavers' group (Aichi Prefecture, Japan, 2024/photo by Yukari Ito)



Students having a lively discussion



Present-day Keris Forging (Yogyakarta, Indonesia, 2024/photo by Ippei Suzuki)

Career Options for Graduates in this Program

- Researchers at universities and research institutes, museums and other institutions of higher education in cultural anthropology.
- Past graduates of the program have been employed by Osaka University, Ritsumeikan University, Tokyo University of Foreign Studies, etc.



National Museum of Ethnology

10-1 Senri Expo Park, Suita City, Osaka 565-8511, Japan

<https://www.minpaku.ac.jp/en>

Japanese Studies

International Research Center for Japanese Studies

National Institutes for the Humanities

Program Outline

Three-year doctoral program
Doctor of philosophy



Chair

ZHAN Xiaomei

Those who enroll in this course can gain research abilities with broad perspectives, under the guidance of multiple instructors, not merely their supervisor. Each instructor is an expert in their field, can manage various research fields in a cross-sectional manner. With such a favorable international and interdisciplinary environment, we consider it the mission of this course to cultivate researchers who will play an active role in both domestic and international academic societies in the future. We welcome applicants who aspire to undertake innovative research with a global perspective.

This program provides education and research on Japanese culture from a global perspective, to promote international and interdisciplinary Japanese studies across the humanities, social sciences, and natural sciences. The goal is to foster researchers in Japan and abroad who will lead the next generation of global Japanese studies. The program will cultivate an interdisciplinary spirit that deals with cross-cutting issues, multifaceted perspectives, a wide range of

interdisciplinarity, and a high level of international reach and originality.

The program offers only a three-year doctoral program for students who have obtained a master's degree. Doctoral candidates who belong to this program will study and conduct research at the International Research Center for Japanese Studies, located in Kyoto, Kyoto Prefecture.



International Research Center for Japanese Studies Conference Room 1



Graduate student project presentation meeting organized by the students themselves



Hanasaki jiji, Database of Chirimen-bon (Crepe-paper Books)

- Researchers in humanities, social sciences, and natural sciences at national level research institutes or private companies; faculty members in humanities, social sciences, and natural sciences departments at universities; researchers conducting cutting-edge project-based research at private companies
- Specialized historians at universities and research institutes; or faculty engaged in education and research on Japanese and regional cultures at universities and other institutions of higher education; researchers and curators at museums, etc.
- Researchers in the private and public sectors in the fields of humanities, social sciences, natural sciences, etc.

Career Options for Graduates in this Program



International Research Center for Japanese Studies

3-2 Oeyama-cho, Goryo, Nishikyo-ku, Kyoto 610-1192 Japan

<https://www.nichibun.ac.jp/en/>

Japanese History

National Museum of Japanese History
National Institutes for the Humanities

Program Outline Three-year doctoral program
Doctor of philosophy



Chair

SAKAMOTO Minoru

The Japanese History Program, based at the National Museum of Japanese History (NMJH, or known as 'REKIHAKU'), allows students to pursue historical research using a variety of approaches, including history, archaeology, folklore, art history, informatics, and analytical science.

One of the main features of this program is that students can conduct practical research using the vast historical and cultural materials in REKIHAKU's collection and the latest analytical equipment. We also aim to collaborate with 19 other programs of SOKENDAI, covering various academic fields in the humanities and sciences. We welcome all students who are engaged in the study of history from a wide range of interests.

This program aims to nurture researchers who can conduct advanced and cutting-edge research in the Japanese history field in the broad sense of the term, with a specialized, international, and interdisciplinary perspective, and who can contribute to society through their advanced research skills and expertise.

This program consists of a three-year doctoral program for students who have obtained a master's degree.

Students in this program will study and conduct research activities at the National Museum of Japanese History, located in Sakura City, Chiba Prefecture. With full use of the museum's vast collection and state-of-the-art analytical techniques, the student's doctoral dissertation will have fruition in the highest level of material-based research.



Collection Storage



Lecture scene from the Exhibition Room 1, in front of Naumann elephant



Public Lecture - Tripartite Talk



Rescue activities of damaged historical and cultural materials (Ishinomaki, Miyagi Pref.)



Lecture in front of a model of an authorized trading ship with a vermilion seal in Exhibition Room 2.



View of Cherry Blossom from the museum entrance hall

Career Options for Graduates in this Program

- Researchers for specialized fields such as history, folklore, and archaeology at universities and research institutes; researchers and curators for museums; etc.



National Museum of Japanese History

117 Jonai-cho, Sakura City,
Chiba Prefecture 285-8502

<https://www.rekihaku.ac.jp/english/index.html>

Japanese Literature

National Institute of Japanese Literature

National Institutes for the Humanities

Program Outline

Three-year doctoral program
Doctor of philosophy



Chair

NISHIMURA Shintaro

In this course, under the guidance of multiple faculty members, students can acquire the skills and research capabilities to work with primary sources related to Japanese literature and related fields from various perspectives. The National Institute of Japanese Literature's extensive collection of Japanese classical and modern texts, documents, and image resources, along with its domestic and international research network, serves as a superb research resource. Additionally, there are opportunities to engage in cutting-edge research projects. We look forward to welcoming those eager to pursue original research and who value their intellectual curiosity.

This program, with the National Institute of Japanese Literature as its parent institute, fosters students to become leaders in the new development of Japanese literature. Specifically, this program aims to enable students to acquire specialized research techniques and comprehensive analytical skills and knowledge by focusing on primary sources as research subjects, mainly literature, among cultural resources. The program fosters logical thinking and writing skills, creative and interdisciplinary perspectives, as well as the ability to

tackle issues in peripheral fields, to nurture researchers with a broad perspective who can tackle issues in surrounding fields and play an active role both domestically and internationally.

This program consists of only the doctoral program, and students in this program will study and conduct research activities at the National Institute of Japanese Literature, National Institutes for the Humanities, located in Tachikawa City, Tokyo.



Closed stacks at the National Institute of Japanese Literature



Graduate School Library



Introduction to Research Methods in Literature

Career Options for Graduates in this Program

- Specialized researchers of Japanese literature at universities and research institutions, faculty members engaged in education and research of Japanese literature at universities and other institutions of higher education, curators at art galleries and museums, etc.



National Institute of Japanese Literature

10-3 Midori-cho, Tachikawa city,
TOKYO 190-0014, Japan
<https://www.nijl.ac.jp/en/>

Japanese Language Sciences

National Institute for Japanese Language and Linguistics

National Institutes for the Humanities

Program Outline Three-year doctoral program
Doctor of philosophy



Chair

**ISHIGURO
Kei**

The Japanese Language Sciences Program has a notable feature among graduate programs in Japan that focus on the study of language: It allows students to conduct research on language in an environment where a wide range of research activities are being conducted, not only in the field of humanities, but also in the field of mathematical and information sciences. This is the reason why the program is named “Japanese Language Sciences,” rather than Japanese linguistics or Linguistics. The Program in Japanese Language Sciences welcomes young researchers who are willing to take on the challenge of conducting original linguistic research.

The Japanese Language Sciences program aims to foster the future generations of researchers who can analyze the Japanese language objectively and quantitatively based on data, utilizing the linguistic resources and research network accumulated by the National Institute for Japanese Language and Linguistics (NINJAL). The program will cultivate the ability and skills of students to conduct linguistic analysis using new

methods in theoretical investigations, experiments, language education, fieldwork, social surveys, and computer simulations, in addition to conventional analytical methods.

This program is a three-year doctoral program for students who have obtained a master's degree. Students in this program will study and conduct research activities at NINJAL located in Tachikawa City, Tokyo



The World Atlas of Transitivity Pairs (WATP)

言語	種別	収録言語
日本語	現代日本語多量データベース	中野真由
日本語	現代日本語多量データベース	中野真由
日本語	現代日本語多量データベース	中野真由
日本語	現代日本語多量データベース	中野真由
日本語	現代日本語多量データベース	中野真由
日本語	現代日本語多量データベース	中野真由
日本語	現代日本語多量データベース	中野真由
日本語	現代日本語多量データベース	中野真由
日本語	現代日本語多量データベース	中野真由
日本語	現代日本語多量データベース	中野真由

Collective search of multiple language corpora



"Kenshukuryōko-shū" published in 1695 about kana orthography of "じぢづづ."

Possible career paths for graduates

- University faculty members and researchers who conduct research using Japanese language information processing and data science in the fields of Japanese language studies and Japanese language education;
- Data scientists and natural language processing engineers who are active in the information processing industry using their linguistic expertise;
- Curators, archivists, and local government officials with linguistic expertise;
- Researchers and educators who teach the Japanese language in Japan and abroad;
- Developers of digital teaching materials related to Japanese language for native speakers and Japanese as a second language.

Career Options for Graduates in this Program



National Institute for Japanese Language and Linguistics

10-2 Midori-cho, Tachikawa City, Tokyo, 190-8561

<https://www.ninjal.ac.jp/english/>

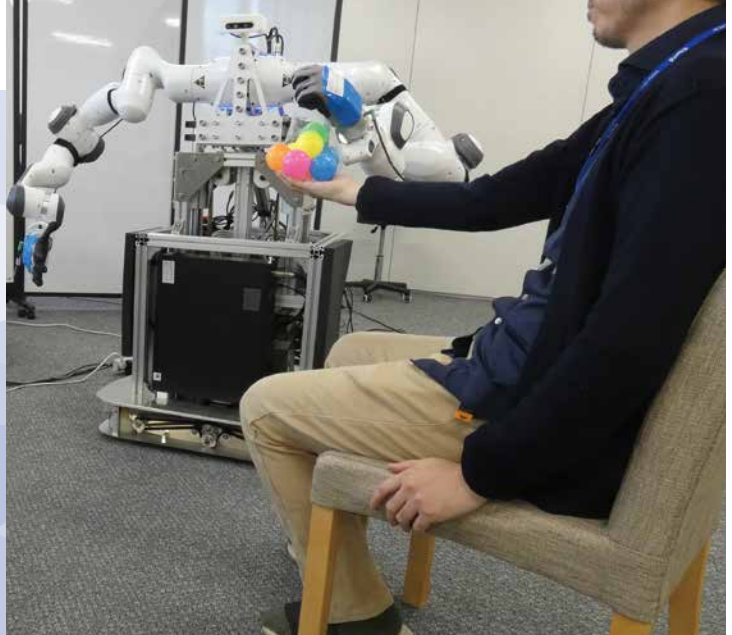
Informatics

National Institute of Informatics

Research Organization of Information and Systems

Program Outline

Five-year doctoral program /
Three-year doctoral program
Doctor of philosophy



Chair

**GOSHIMA
Masahiro**

Informatics is a comprehensive academic field encompassing computer science and information engineering, as well as AI and mathematics. In addition, it includes human and social informatics, which focus on human beings and society. The program aims to nurture excellent researchers, to train professionals with advanced expertise, and to produce leaders who can play active roles on the global stage.

The informatics program aims to nurture researchers who will make new, cutting-edge contributions to the field of informatics, an interdisciplinary field that crosses a wide range of disciplines from information science and information engineering to humanities and social informatics, for the further development of the information society.

This program has a five-year doctoral program for bachelor's degree holders and a three-year doctoral program for master's degree holders. Students enrolled in this program conduct academic and research activities at the National Institute of Informatics, located in Chiyoda-ku, Tokyo.



Socializing in the 16th floor lounge



Poster Exhibition at an Open House



High-performance cloud for in-house research

Career Options for Graduates in this Program

- Researchers and engineers engaged in the field of informatics (basic theory and application of information technology (IT), basic and applied AI and data sciences, etc.) at domestic and overseas universities, public research institutions, and private companies
- Faculty in the department of informatics at universities and other institutions
- Researchers and engineers who can conduct project-based research on informatics at companies and universities



National Institute of Informatics

2-1-2 Hitotsubashi, Chiyoda-ku,
Tokyo, 101-8430 Japan
<https://www.nii.ac.jp/en/>

Statistical Science

The Institute of Statistical Mathematics

Research Organization of Information and Systems

Program Outline

Five-year doctoral program /
Three-year doctoral program
Doctor of philosophy



Chair

NINOMIYA
Yoshiyuki

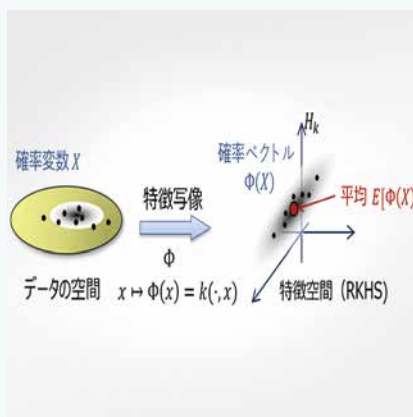
The Institute of Statistical Mathematics provides an environment that allows smooth access to cutting-edge research. This environment enables graduate students to come into contact with cutting-edge research easily. Various research projects are in progress, and graduate students can participate in any that interest them. The graduate students are guided by primary supervisors and sub-supervisors, and various courses are offered to help the graduate students acquire basic skills. The Statistical Science program is considered the best environment in Japan for studying and researching statistical science.

To realize the extraction of information and knowledge from real-world data, this program conducts education and research related to data collection design, modeling, inference and prediction, as well as their fundamentals in mathematics and practical application. The program aims to develop researchers who are equipped with creative research skills that contribute to solving various intricately intertwined important issues.

This program consists of two programs: a five-year doctoral program for bachelor's degree students and a three-year doctoral program for master's degree students. Students enrolled in this program will conduct academic and research activities at the Institute of Statistical Mathematics, located in Tachikawa city, Tokyo.



Library of the Institute of Statistical Mathematics



Kernel method



Supercomputer System for Data Assimilation (HPE Superdome Flex)

Career Options for Graduates in this Program

- Local and foreign universities, national and corporate research institutes, private companies (e.g., IT, manufacturing, financial, and pharmaceutical companies), etc.



The Institute of Statistical Mathematics

10-3 Midori-cho, Tachikawa,
Tokyo, 190-8562 Japan

https://www.ism.ac.jp/index_e.html

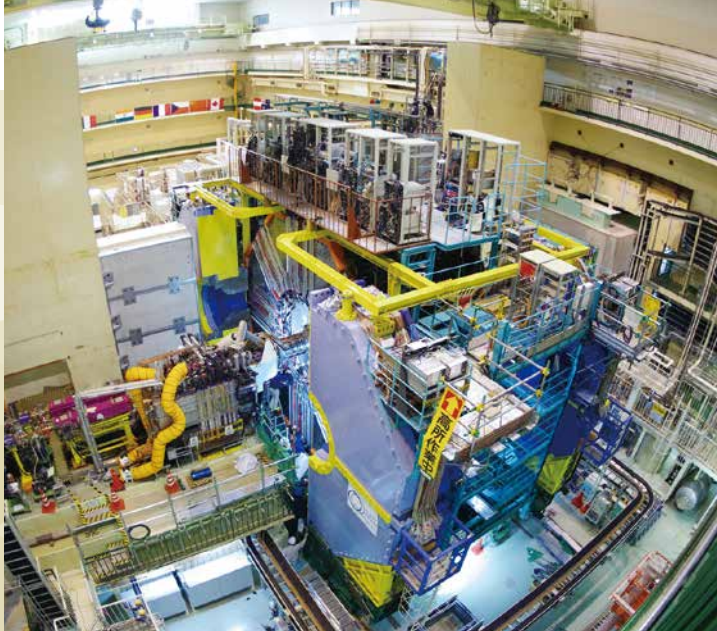
Particle and Nuclear Physics

Institute of Particle and Nuclear Studies

High Energy Accelerator Research Organization

Program Outline

Five-year doctoral program /
Three-year doctoral program
Doctor of philosophy



Chair

**MIHARA
Satoshi**

KEK has been playing a central role in exploring the frontiers of particle and nuclear physics as one of the leading research institutes in the world such as CERN in Europe. SOKENDAI students belong to either theoretical or experimental group in KEK and are involved in a cutting-edge research project, which enables them to develop all the skills and capabilities required to become a researcher by the time they get Ph.D. There are indeed many people who are already working worldwide after finishing the program. We welcome all the students who wish to become a researcher in this extraordinary environment for research and education.

We aim to foster the next generation of researchers who will explore the origin and structure of the universe. They will study how the universe works at the very smallest and largest levels — exploring elementary particles and atomic nuclei, alongside options to study cosmology and other related fields. We will provide students with a broad perspective and high level of expertise, enabling them to actively contribute to the future of research across a wide range of interconnected scientific fields. We offer two programs: a five-year doctoral program for

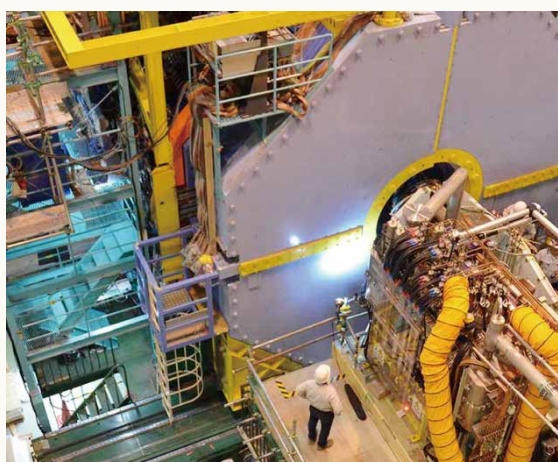
students with a bachelor's degree and a three-year doctoral program for those with a master's degree. Students will belong to either the Theoretical Research Group or the Experimental Research Group of the Institute of Particle and Nuclear Studies (IPNS) at the High Energy Accelerator Research Organization (KEK). They will conduct their studies and research activities at KEK's Tsukuba Campus, Tokai Campus, the Wako Nuclear Science Center, or at experimental facilities located worldwide.



T2K near detector ©KEK



Daily discussions in the theory group by SOKENDAI students and their supervisor ©KEK



The Belle II detector that started operation with the aim of discovering new physics ©KEK

Career Options for Graduates in this Program

- Researchers and university faculty members in particle physics, nuclear physics, cosmology and related fields; researchers and engineers who carry out cutting-edge project-based research at companies and national laboratories; and researchers and engineers in the private and public sectors in the fields of nuclear power, radiation, information processing, electricity, electronics, and communications.



Institute of Particle and Nuclear Studies

1-1 Oho, Tsukuba, Ibaraki,
305-0801 Japan

<https://soken-pnp.kek.jp/en/>

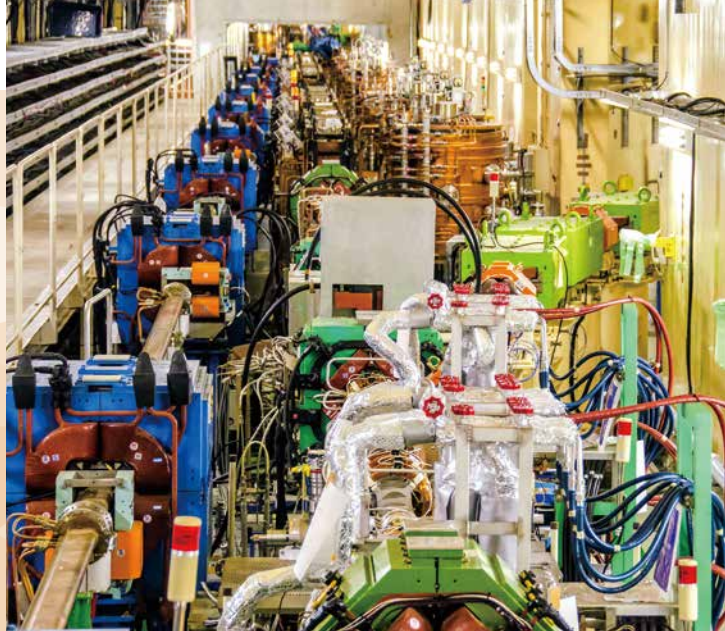
Accelerator Science

Accelerator Laboratory / Applied Research Laboratory

High Energy Accelerator Research Organization

Program Outline

Five-year doctoral program /
Three-year doctoral program
Doctor of philosophy



Chair

**MIURA
Takako**

In the Accelerator Science Program, the world's most advanced large accelerators of the High Energy Accelerator Research Organization (KEK) are in operation close at hand, and students can carry out research in an environment where advanced technological development and research in various scientific and technological fields of the accelerators are being conducted. Students learn basic knowledge about accelerators and gain practical experience using a compact accelerator for educational purposes, before carrying out doctoral research in their specialized field. We welcome those who are willing to find and solve problems on their own while collaborating with others.

High-energy accelerators are large experimental machines for the cutting-edge research on the various components in each level of nature, from elementary particles and atomic nuclei to molecules consisting of matter including life. In recent years, accelerator science has made remarkable progress in applications that directly benefit society, such as industry and medicine. It is a complex science that consists of essence of the most advanced science and technology for the fundamental research and development of accelerators. Students in the accelerator science program acquire practical knowledge of accelerator science and conduct research from both theoretical and experimental perspectives. They can choose to study and conduct research also in the fields of

radiation science, computer science, superconducting cryogenics, and mechanical engineering, which support accelerator science. Students in this program aim to become researchers who will be responsible for the future of accelerator science and contribute to promoting natural science through accelerator science.

This program consists of two programs: a five-year doctoral program for bachelor's degree holders and a three-year doctoral program for master's degree holders. Students will study and conduct research at the Accelerator Laboratory and Applied Research Laboratory of the High Energy Accelerator Research Organization (KEK), which has two large campuses in Tsukuba City and Tokai Village, Ibaraki Prefecture.



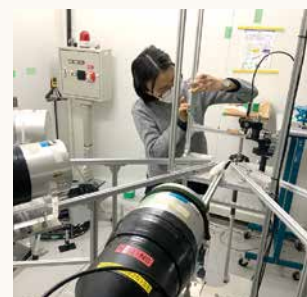
Superconducting magnets in the J-PARC Neutrino Experimental Facility



Assembling work of fast beam kicker



Beam study at Photon Factory (PF) electron storage ring



Installation of detectors for photoneutron measurement

Career Options for Graduates in this Program

- Researchers at domestic and foreign accelerator related research institutes and private companies



Accelerator Laboratory / Applied Research Laboratory

1-1 Oho, Tsukuba, Ibaraki,
305-0801 Japan

<https://www2.kek.jp/accl/sokendai/>

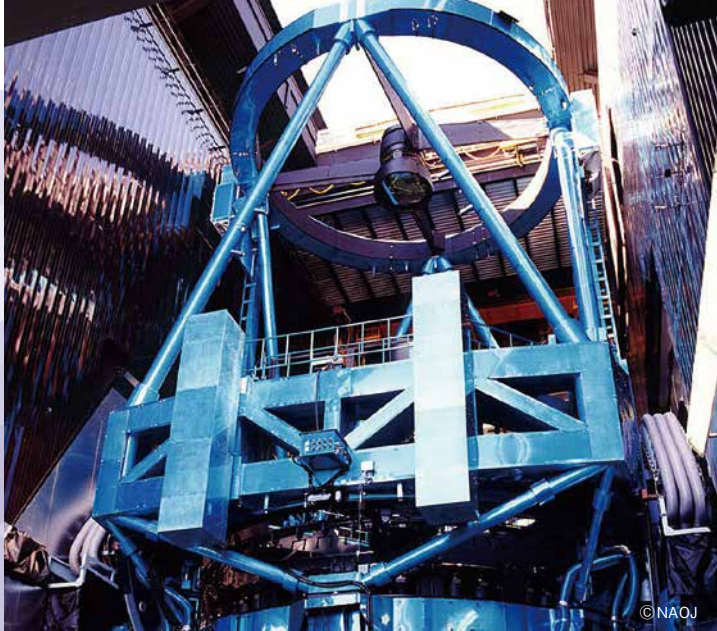
Astronomical Science

National Astronomical Observatory of Japan

National Institutes of Natural Sciences

Program Outline

Five-year doctoral program /
Three-year doctoral program
Doctor of philosophy



© NAOJ

Chair

**NAMIKI
Noriyuki**

In Astronomical Science Program, of the Graduate University for Advanced Studies, students are engaged in astronomical research through theory, observations, or development of new observational instruments. National Astronomical Observatory of Japan, with many researchers in diverse fields, provides an auspicious setting where many graduate students can study and pursue their own research. Are you good at math and physics? Do you enjoy programming? Does actually observing the universe thrill you like nothing else? Do you get excited putting together instruments and apparatuses? If your answer is yes for any of these, there is a place here for your activities. Please come and study at the Astronomical Science Program.

Astronomical Science Program offers advanced education and research through a wide range of observational and theoretical studies with state-of-the-art optical-infrared and radio telescopes. This program covers the development and application of advanced new technologies fundamental to astronomical observation; the design, fabrication, and experimentation of new observational instruments; the development of data acquisition and analysis methods; the development of technologies ranging from basic to advanced

observational astronomy; as well as observational research using these technologies and theoretical research using supercomputers.

The program offers a five-year doctoral program for bachelor's degree holders and a three-year doctoral program for master's degree holders.

Graduate students enrolled in the program will conduct their studies and research activities at the National Astronomical Observatory of Japan (NAOJ), based in Mitaka City, Tokyo.



ALMA ©X-CAM/ALMA (ESO/NAOJ/NRAO)



The new supercomputer for astronomy "ATERUI III." © NAOJ

Career Options for Graduates in this Program

- Research and education staff in astronomical sciences and related fields at universities and research institutes in Japan and abroad; engineers at private companies; and science communicators



National Astronomical Observatory of Japan

2-21-1 Osawa, Mitaka, Tokyo,
181-8588 Japan
<https://www.naoj.jp/en/>

Fusion Science

National Institute for Fusion Science

National Institutes of Natural Sciences

Program Outline

Five-year doctoral program /
Three-year doctoral program
Doctor of philosophy



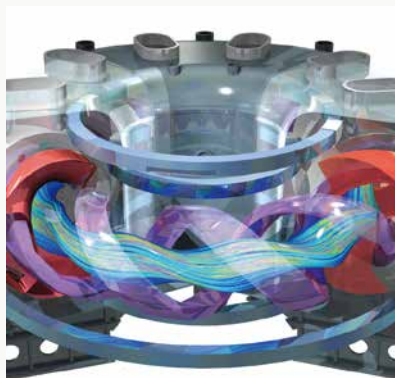
Chair

SAKAKIBARA
Satoru

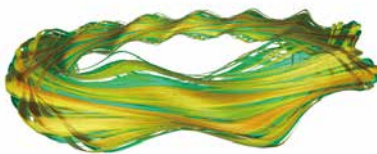
The Fusion Science Program seeks students who are actively engaged in unexplored research subjects such as understanding of plasma physics, development of measurement devices, control technology, development and research of materials with excellent heat and radiation resistance required for reactors, and superconductivity technology, in order to realize a fusion reactor at an early date. Our goal is to develop general engineers who can be applied to any research field by honing their own skills with fusion science research as their axis. We look forward to your challenge.

The Fusion Science program fosters integrated science and engineering scholars who have a systematic understanding of the wide range of science and engineering fields required for the early realization of fusion reactors and who are capable of working in a variety of research fields. By conducting advanced research (experimental, theoretical, etc.), rationally understanding research results, and taking on unexplored research

challenges, our students acquire new technologies and skills with high value and contribute to the realization of fusion energy and other human developments. This program consists of a five-year doctoral program for bachelor's degree holder and a three-year doctoral program for master's degree holder. Students will conduct their studies and research activities at the National Institute for Fusion Science (NIFS), located in Toki City, Gifu Prefecture.



The simulation of microscopic instability in core plasmas of large helical devices using a gyrokinetic particle code



Simulation of turbulence from LHD first-principles



Superconducting conductor test facilities in Superconducting Magnet System Laboratory

Career Options for Graduates in this Program

- Engineers and researchers in fusion and related fields at national laboratories; faculty members in fusion studies (plasma experiments, theory, materials engineering, superconducting engineering, etc.) at universities; engineers and researchers who carry out cutting-edge project-based research at companies; etc.



National Institute for Fusion Science

322-6, Oroshi-cho, Toki,
Gifu, 509-5292 Japan

<https://www.nifs.ac.jp/en/>

Space and Astronautical Science

Institute of Space and Astronautical Science
Japan Aerospace Exploration Agency

Program Outline Five-year doctoral program /
Three-year doctoral program
Doctor of philosophy



© JAXA

Chair

YAMADA
Toru

The Space and Astronautical Science Program leverages the collaboration with Institute of Space and Astronautical Science, JAXA, to provide advanced education and research guidance by researchers who are actively involved in conducting research and projects at the forefront of space science. We encourage students to delve into learning and researching new fields of science and engineering in the vast expanse of space utilizing various means such as space telescopes and experiments, spacecraft for scientific exploration of the solar system, nano-satellites, balloon experiments, rockets. We look forward to the aspirations of motivated students who wish to contribute to the future of space science research and development, as well as the future utilization of space.

The Space and Astronautical Science Program provides advanced education and research guidance through theoretical research, analysis of observational data, and practical research and development in astrophysics, solar system science, and space engineering. The program fosters researchers with a broad perspective and internationally advanced abilities, as well as individuals who contribute to society with advanced expertise. In particular, through close contact with

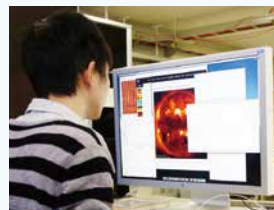
cutting-edge, large-scale space projects, the program cultivates not only a rich academic background in space science but also the ability to plan space projects. This program consists of two programs: a five-year doctoral program for bachelor's degree holder and a three-year doctoral program for master's degree holder. Students will conduct their studies and research activities at Institute of Space and Astronautical Science (ISAS) located in Sagamihara, Kanagawa Prefecture.



Epsilon rocket on a launch pad
©JAXA



Participation in the sounding rocket experiment as the Field works course.



Analysis of satellite observation data



A laboratory experiment



Smart Lander for Investigating Moon (SLIM) realized a high-precision landing on the Moon. ©JAXA/TOMY/Sony Group Corporation/Doshisha University



X-ray Imaging and Spectroscopy Mission (XRISM), which unveils the mysteries of the universe ©JAXA

Career Options for Graduates in this Program

- Researchers in the field of space science (astrophysics, solar system science, space engineering) at universities, national laboratories, etc.; engineers and researchers in space development and related fields at private companies and national laboratories; engineers who carry out cutting-edge project-based research at private and public companies, etc.



Institute of Space and Astronautical Science

3-1-1 Yoshinodai, Chuo-ku, Sagamihara,
Kanagawa, 252-5210 Japan
<https://www.isas.jaxa.jp/en/>

Molecular Science

Institute for Molecular Science
National Institutes of Natural Sciences

Program Outline

Five-year doctoral program /
Three-year doctoral program
Doctor of philosophy



Chair

**MATSUI
Fumihiko**

Molecular science covers a wide range of natural sciences such as chemistry, physics, and life sciences. In this course, students will learn under the careful guidance of faculty members who are researchers in the above fields and their interdisciplinary areas, and will promote research using facilities and equipment not available at ordinary universities. Research keywords include quantum technology, spectroscopy, imaging, superconductivity, chirality, spin, topology, material conversion, energy conversion, catalysis, enzymes, proteins, etc. We welcome your enrollment.

The Molecular Science Program establishes a systematic understanding of molecules, the basic building blocks of matter, and trains the next generation of researchers to unravel the wide variety of phenomena exhibited by matter. We aim to produce graduates who can conduct advanced research (e.g., experiments, measurements, theory), rationally understand research results, challenge unexplored issues from free inspiration, pursue new

intellectual values and universal truths, and contribute to human development based on molecular science.

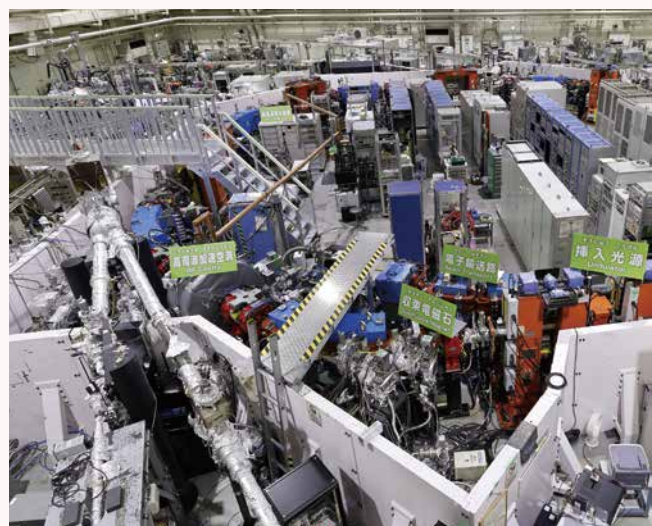
This program consists of two programs: a five-year doctoral program for bachelor's degree holders and a three-year doctoral program for master's degree holders. Students will conduct their studies and research activities at the National Institute for Molecular Science, located in Okazaki, Aichi Prefecture.



Measurement of the electronic state by photoelectron spectroscopy



Purification of proteins by high-performance liquid chromatography



UVSOR Synchrotron Facility

Career Options for Graduates in this Program

- Researchers and faculty members in the field of molecular science at universities and national and public research institutes; Researchers and engineers who pursue advanced research challenges through public research projects and in private research institutes.



Institute for Molecular Science

38 Nishigonaka, Myodaiji, Okazaki,
Aichi, 444-8585 Japan

<https://www.ims.ac.jp/en/>

Materials Structure Science

Institute of Materials Structure Science

High Energy Accelerator Research Organization

Program Outline

Five-year doctoral program /
Three-year doctoral program
Doctor of philosophy



Chair

**KUMAI
Reiji**

In The Materials Structure Science Program, cutting-edge scientific research is conducted using quantum beams such as synchrotron radiation, neutrons, muons, and slow positrons obtained from large accelerators. In this context, the program fosters researchers who will lead sciences and technologies on the structure and function of materials in a wide range of research fields. Graduates of the program are expected to become not only core researchers at domestic or overseas quantum beam facilities, but also power users who promote research using quantum beams.

The Materials Structure Science program conducts cutting-edge scientific research using quantum beams, such as synchrotron radiation, neutrons, muons, and slow positrons obtained from advanced accelerators. In this program, we train researchers who will pioneer fundamental and cutting-edge research to elucidate the structure and function of materials in an extremely wide range of research fields, including physics and chemistry, materials science, life science, medicine, environmental science, and earth science. By promoting research on further advancement of quantum beam generation and

utilization technologies, this program aims to produce PhDs who will contribute to the development of a new frontier in materials structure science.

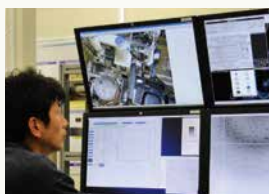
We offer two programs: a five-year doctoral program accepting bachelor's degree holders and a three-year doctoral program accepting master's degree holders. Students will conduct their studies and research activities at the High Energy Accelerator Research Organization (KEK) Institute of Materials Structure Science, located in Tsukuba and Tokai, Ibaraki Prefecture.



Synchrotron Radiation Facility, Photon Factory (PF) ©IMSS



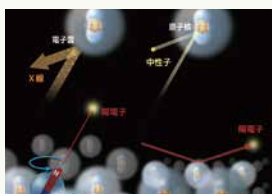
Experimental Hall of Materials and Life Science Experimental Facility (MLF) ©IMSS



Biological macromolecular X-ray crystallography experiment using synchrotron radiation



Muon D1 Instrument of MLF ©IMSS



Four kinds of quantum beams



Experimental hall of PF ©IMSS

Career Options for Graduates in this Program

- Engineers and researchers at domestic and overseas quantum beam facilities; faculty members and researchers in material sciences and life sciences departments at universities and public research institutions; engineers and researchers who carry out and lead cutting-edge project-based research at public and private companies.



Institute of Materials Structure Science

1-1 Oho, Tsukuba, Ibaraki,
305-0801 Japan

<https://www2.kek.jp/imss/eng/>

Global Environmental Studies

Research Institute for Humanity and Nature

National Institutes for the Humanities

Program Outline

Three-year doctoral program
Doctor of philosophy



Chair

**KONDO
Yasuhisa**

The Program in Global Environmental Studies is newly established in SOKENDAI in FY2023. RIHN offers a range of unique opportunities in global environmental research, including making use of RIHN's interdisciplinary research projects and the related expertise of individual faculty members. We look forward to meeting applicants who strive to promote unique research perspectives, and who will benefit from the wide range of lectures and seminars in Global Environmental Studies offered at RIHN.

The Global Environmental Studies Program is based on the Research Institute for Humanity and Nature (RIHN), a constitutional member of the National Institutes for Humanities (NIHU). RIHN strives for the realization of an equitable, fair and sustainable society globally by formulating how the relationship of people and nature to be, from the community to global scale. To realize this vision, it leads the way in the comprehensive study of the environment that aims for a practice directed towards solving global environmental problems and a fundamental and inclusive understanding of the mutual interaction of humans and nature, based on interdisciplinary research that fuses humanities, social science and natural science and as well as

transdisciplinary research that cooperates and collaborates with society. In such a research environment of RIHN, this program is designed to train independent researchers who set research agenda and conduct research based on their own expertise. To encourage students to gain knowledge and methodologies accumulated in the academic fields that constitute Global Environmental Studies, the program provides small-group education and research training based on advanced theories, methods, and practices.

This program offers a three-year doctoral program for students who have obtained a master's degree. Students in this program will study and conduct research at RIHN in Kyoto.



©Genki Imamori

Project members visiting the Meisui no Satoyama in Ogi, Otsu City, Shiga Prefecture, guided by photographer Mitsuhiro Imamori (SATOCONN Project, FY2025-2028)



Towards sustainable use of nitrogen (Sustal-N-able Project, FY2022-2027)



TD training course co-hosted by RIHN and Future Earth Japan Hub (TERRA* School 2025)



"Mizu-no-wa Classroom" in Yaese Town, Okinawa. Springwater survey with local children (LINKAGE project, implementation period: FY2022-2026)



One of the best analytical research environments for stable isotope analysis in Japan



Project laboratory which reflects a research environment that allows for debates and mutually inspiring interactions without being bound by traditional laboratory setting

Career Options for Graduates in this Program

Possible career paths for graduates

- Faculties engaged in education and research on environmental studies at universities and other institutions of higher education.
- Engineers, researchers, and support staff in environment related fields at companies, government offices, national and public research institutes, local governments, international organizations, and NGOs.
- Researchers and curators at museums and other institutions.



Research Institute for Humanity and Nature

457-4 Motoyama, Kamigamo, Kita-Ku, Kyoto, 603-8047

https://www.chikyu.ac.jp/rihn/education/public_E/

Polar Science

National Institute of Polar Research

Research Organization of Information and Systems

Program Outline

Five-year doctoral program /
Three-year doctoral program
Doctor of philosophy



photo by Moto Kawamata, Ph.D. Polar Science

Chair

**HOKADA
Tomokazu**

The Polar Science Program conducts education and research focused on natural phenomena occurring in the regions of the North and South Poles, embracing a view of the Earth as a global-scale environment. Through these activities, we strive to cultivate outstanding researchers equipped with advanced research and the ability to work as “field scientists”. The program welcomes students with the desire to take up the emerging challenges of polar science in a new era.

The Polar Science Program aims to nurture outstanding researchers equipped with advanced research capabilities in space and planetary science, solar-terrestrial physics, meteorology, glaciology, atmospheric science, oceanography, geoscience, solid earth science, bioscience, and related fields, to explore universal principles and laws that govern various natural and physical phenomena in the polar regions and high mountains. The program also expects students to elucidate the role of

polar regions in the global environmental changes and the earth and planetary systems, as well as the geological and natural history of polar regions.

We offer two programs (curriculums): five-year and three-year doctoral program that accepts bachelor's degree holders and master's degree holders, respectively. Students in the program will conduct their studies and research activities at the National Institute of Polar Research, located in Tachikawa, Tokyo.



Aurora Borealis in Antarctica
(photo by Hidehiko Suzuki, Ph.D. Polar Science)



Photo taken from the Antarctic Observation Ship, Shirase
(photo by Keigo Takahashi, Ph.D. Polar Science)



Field survey in Antarctica
(photo by Tatsuro Adachi, Ph.D. Polar Science)

Career Options for Graduates in this Program

- Researchers and engineers in the field of earth and planetary sciences and other related science and engineering fields at universities, national laboratories, private companies, etc.



National Institute of Polar Research

10-3 Midori-cho, Tachikawa,
Tokyo, 190-8518 Japan

<https://www.nipr.ac.jp/english/>

Basic Biology

National Institute for Basic Biology

National Institutes of Natural Sciences

Program Outline

Five-year doctoral program /
Three-year doctoral program
Doctor of philosophy



Chair

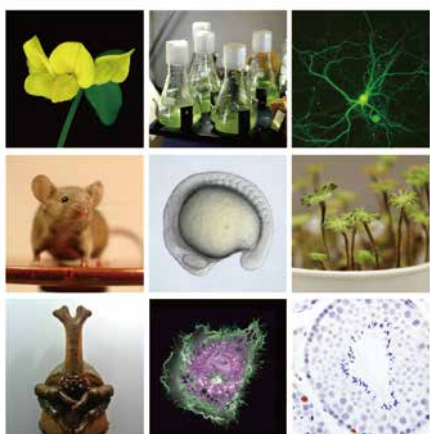
**NIIMI
Teruyuki**

In the Basic Biology program, we challenge innovative biology by harnessing the unique traits of diverse organisms and employing cutting-edge technologies. Our goal is to foster students' distinct problem-finding and problem-solving abilities and to develop the qualities of researchers who can lead future biological research. Together, let's collaborate and embark on the exciting journey of exploring new frontiers in biology.

At the National Institutes for Basic Biology, the parent institute for the Basic Biology Program, we conduct research aimed at elucidating the common and fundamental mechanisms that underlie all living organisms, that contribute to biological diversity, and that enable organisms to adapt to their environment. The Basic Biology Program seeks to cultivate researchers capable of identifying fundamental and pressing

question in the biological science through research activities and coursework.

This program offers both a five-year and a three-year doctoral program for students with a bachelor's degree and a master's degree, respectively. Students primarily conduct their academic studies and research activities at the National Institute for Basic Biology, located in Okazaki, Aichi Prefecture.



A variety of model organisms and novel model organisms under study



At the Laboratory



At the Laboratory



National Institute for Basic Biology, Myodaiji area



National Institute for Basic Biology, Yamate area



To cultivate future leaders in biology

Career Options for Graduates in this Program

- Faculty members and researchers in life science and related fields at universities and research institutes; skilled professionals in charge of research and development at companies that engage life sciences, chemical sciences, pharmaceuticals, medical sciences, and other related fields



National Institute for Basic Biology

38 Nishigonaka, Myodaiji, Okazaki,
444-8585 Japan

<https://www.nibb.ac.jp/en/>

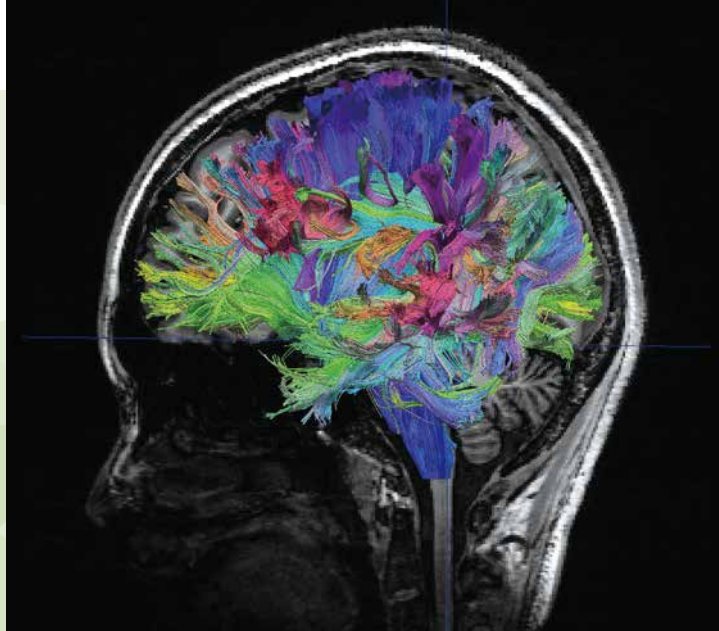
Physiological Sciences

National Institute
for Physiological Sciences

National Institutes of Natural Sciences

**Program
Outline**

Five-year doctoral program /
Three-year doctoral program
Doctor of philosophy



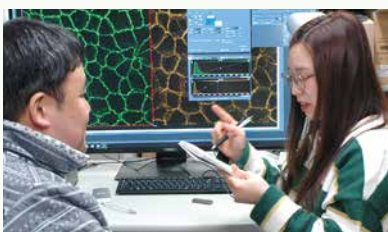
Chair

**FURUSE
Mikio**

The Physiological Sciences Program promotes research that leads to a better understanding of how the human body works and its mechanisms, with a particular focus on the brain, nerves, and the functions of organ systems interconnected with the brain. Research on the mechanisms of our body is directly related to maintaining health and understanding pathological conditions. Students who are interested in the human body in life science are invited to join us in the Physiological Sciences Program, which offers an excellent research environment.

Physiological science is a field of study that elucidates the functions and mechanisms of the body. It not only contributes to the development of life science but also provides scientific guidelines for people to lead healthy and fulfilling lives and information that is fundamental to understanding the mechanisms of disease. The Physiological Science Program aims to contribute to the accumulation of new knowledge in the life sciences by working to elucidate issues in the field of physiological

science related to the role of the brain and nervous system and biological homeostasis, and to produce researchers and specialists with the foresight to pioneer this field. This program is offered as a five-year doctoral program accepting bachelor's degree holders or a three-year doctoral program accepting master's degree holders. Students in this program will conduct their studies and research activities at the National Institute for Physiological Sciences (NIPS) in Okazaki, Aichi Prefecture.



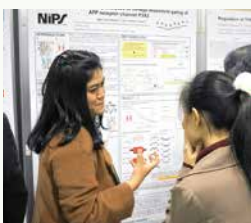
Careful research guidance in small groups



A scene from the degree conferment ceremony



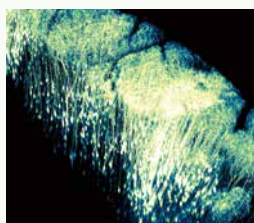
Research environment with access to advanced equipment



Presentation and discussion of research findings at an international meeting



Magnetic resonance imaging of human brain



Three-dimensional imaging of living neurons in the brain

Career Options for Graduates in this Program

- Academic research institutions, life science-related companies, etc.



National Institute for
Physiological Sciences

38 Nishigonaka, Myodaiji, Okazaki,
444-8585 Japan

<https://www.nips.ac.jp/eng/>

Genetics

National Institute of Genetics

Research Organization of Information and Systems

Program Outline

Five-year doctoral program /
Three-year doctoral program
Doctor of philosophy



Chair

**SAITO
Kuniaki**

Graduate students in the Genetics Program participate as active research members in the enriched environment of the National Institute of Genetics (NIG). NIG has more faculty than students, allowing students to select Progress Committee members from various labs and seek research advice from them at any time. The Progress Committee system helps students broaden the scope of their research through guidance from faculty with diverse areas of expertise. Alumni trained as researchers at NIG go on to serve society in diverse fields in both academic and non-academic roles.

The Genetics Program fosters researchers with deep insight and knowledge in the field of Life Sciences centered on genetics and who possess a rich, conceptual ability to envision the future of research.

The Genetics Program offers two programs: a five-year doctoral program and a three-year doctoral program. Students primarily conduct their research activities at the National Institute of Genetics in Mishima, Shizuoka Prefecture.



Access to research facilities with advanced technology



Develop ability to think and debate logically through practical discussion



Students may choose how deeply to immerse themselves in research



At poster presentations students can discuss their research progress with numerous faculty and researchers from the institute



Frequent seminars by researchers from around the world in a wide variety of related fields

Career Options for Graduates in this Program

- Researchers at universities / research institutes / private companies both in Japan and abroad, engineers in information technology / intellectual property management, and publishers



National Institute of Genetics

1111 Yata, Mishima, Shizuoka,
411-8540 Japan

<https://www.nig.ac.jp/nig/>

Integrative Evolutionary Science

Research Center
for Integrative Evolutionary Science

**Program
Outline**

Five-year doctoral program /
Three-year doctoral program
Doctor of philosophy



Chair

**KUTSUKAKE
Nobuyuki**

What is the driving force of our research? Because we want to know more. Because we are interested in. Because we have curiosity. Because we want to solve an unsolved problem. Because we want to make a great discovery. The driving force must be different among researchers but we all share the same feeling—we like research. The integrative Evolutionary Science Program is for students who have such feelings. We look forward to studying with students who like evolution and science & society.

Integrative Evolutionary Science is a new academic field that seeks to understand the interactions and temporal dynamics of life, society, and information by comprehensively understanding the past and present, and by further aiming to predict the future. Through this approach, we seek not only to advance evolutionary biology but also to deepen our understanding of human nature and contribute to the solution of societal challenges. The Integrative Evolutionary Science Course, in collaboration

with the Research Center for Integrative Evolutionary Science, cultivates researchers who build on a strong understanding of the past and present to develop future-oriented perspectives, and who will take leading roles in the next generation of this field through both deep expertise and a broad, interdisciplinary view. This program consists of two programs: a five-year doctoral program for students with a bachelor's degree and a three-year doctoral program for students with a master's degree.



Tour the RCIES' unique experimental facilities at the open campus



Cultivation of birds'-eye view of life-history by lectures such as history of science and science philosophy



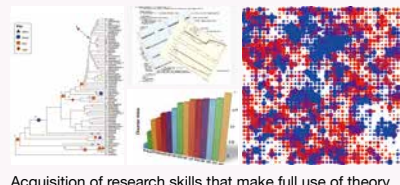
Practical training and research using advanced facilities including such as light microscopes electron microscopes, and molecular biology experimental equipment



Evolution explored through current and past field research



Academic interactions with other SOKENDAI institutions and other universities, such as MMBS



Acquisition of research skills that make full use of theory, statistical mathematics, large-scale data analysis, and simulation.

Career Options for Graduates in this Program

- Researchers in the field of life sciences (evolutionary biology, molecular biology, genetics, ecology, medicine, etc.) or in the field of science and society (history of science, philosophy of science, science and technology studies, bioethics, etc.) at universities, research institutes, private companies, NGOs, and government agencies; science communicators



Research Center for Integrative Evolutionary Science

Shonan Village, Hayama, Kanagawa,
240-0193 Japan

<https://rcies.soken.ac.jp/>

Education & Research Grant



Taking courses in other programs

SOKENDAI has classified its courses offered into four levels, each representing the level of expertise and difficulty of the course content, to indicate whether the content is suitable for students in related fields or adjacent areas of specialization. Students are encouraged to use this level indicator to determine whether they can/should take a course necessary for their own research, not only in their own program but also in courses offered by other programs.



Internal Joint Advising Program

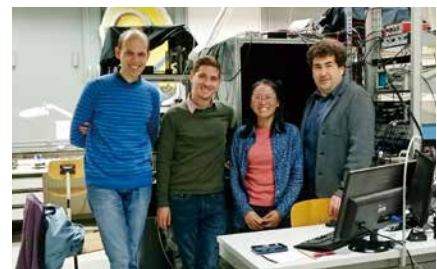
The internal joint advising program is where two faculty members from different research institutions provide joint research guidance in response to the needs of students who wish to work on complex and interdisciplinary research projects across the different research institutions.



SOKENDAI Student Dispatch Program

This program encourages SOKENDAI students to seek a short-term research opportunity abroad and/or a long-term collaborative research project in and outside Japan that may lead to their career in the future. The program follows the educational goals of SOKENDAI, “advanced specialties and expertise”, “broad perspective”, and “international competitiveness”, and intends to financially support such research opportunities of SOKENDAI students.

2025	Category 1 (International Conference / Meeting)	▶ 50
	Category 2 (Study Abroad)	▶ 25
	Category 3 (Domestic Study Away)	▶ 3



International Collaborative Degree Program

SOKENDAI is promoting the “International Collaborative Degree Program”. This is an agreement with an overseas institution of higher education to provide joint thesis supervision to one student by faculty members from both institutions, thereby broadening the range of thesis and further increasing the international mobility of young human resources.



Research society in France



Left : Paris student residence
Right : Degree examination

Overseas higher education institutions that have concluded agreements with SOKENDAI for international collaborative degree programs

Nation	Institution
Thailand	Vidyasirimedhi Institute of Science and Technology
Georgia	Georgian Technical University
France	École Centrale de Nantes
France	Université Paris-Saclay
France	Sorbonne Université
Italy	Università di Bologna
China	Southwest Jiaotong University

SOKENDAI Special Researcher Program

The SOKENDAI Special Researcher Program is designed to develop future leaders who will contribute to science, technology and innovation in Japan by appointing SOKENDAI students as ‘SOKENDAI Special Researchers’ and providing financial support as well as various opportunities for developing a wider scope of research and carrier paths to them. There are three categories of this program as follows.

Category	Outline
General Category	Students in all research areas enrolled in the equivalent of 3-year doctoral course at SOKENDAI, who satisfy conditions listed in section 3, are eligible to apply.
Special Category (BOOST)	This category is designed to develop leading scientists in the field of Artificial Intelligence (AI). Conditions listed in section 3 must be satisfied.
Collaborative Research Type	Students who are conducting or are willing to conduct collaborative research with researchers from other programs (departments), institutions or companies, who satisfy conditions listed in section 3, are eligible to apply

General Category is subsidized by Japan Science and Technology Agency (JST) under “SPRING: Support for Pioneering Research Initiated by the Next Generation” and Special Category (BOOST) is subsidized by JST under “BOOST: Broadening Opportunities for Outstanding young researchers and doctoral students in Strategic areas.”

次世代研究者挑戦的研究プログラム
Support for Pioneering Research Initiated by the Next Generation



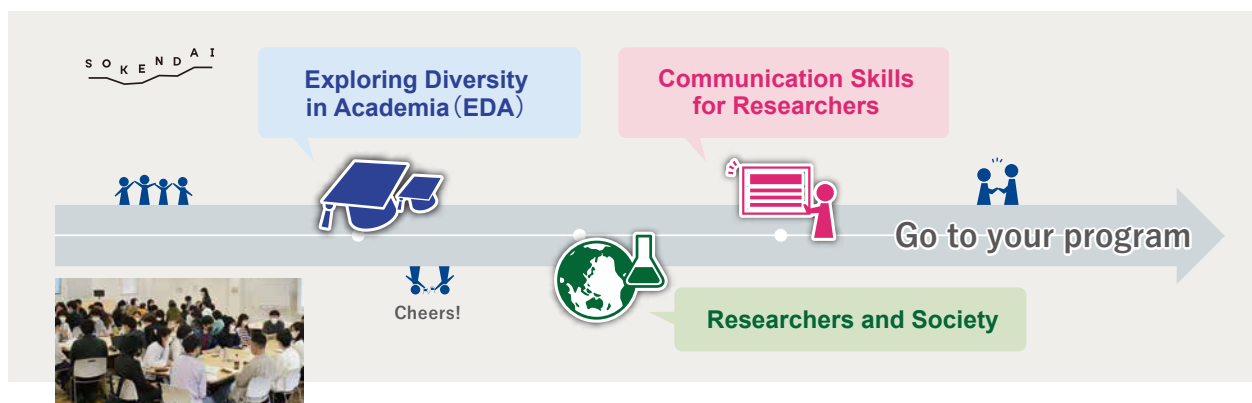
The number of
SOKENDAI
Special Researcher

Year	
2021	19
2022	40
2023	56
2024	53
2025	75

SOKENDAI Freshman Course

The Freshman Course is an intensive course for newly-enrolled students of SOKENDAI. It is a unique program that intends to provide our new students with fundamental knowledge and skills for a researcher; and, is also an opportunity to learn about the breadth of academia through

interactions with peer students and researchers coming from different fields. The Freshman Course is held for a few days long near the Hayama campus. It consists of three sessions: “Exploring Diversity in Academia(EDA)”, “Researchers and Society” and “Communication Skills for Researchers”.



Life Science Retreat

Life Science Retreat is a scientific retreat that invites SOKENDAI students and faculties majoring in biology for academic interactions. Through these interactions, it aims to foster a broader understanding of life science and the ability to contribute to the development of the field.

English is used throughout the course to enhance participants’ international competency. The student committee is responsible for planning and coordinating the scientific content. In this course, students, especially those involved in the committee, are expected to refine their organizational skills through planning and operations while also improv-

ing their presentation skills.

In 2025, it was held over 2 days at Yamanashi Prefecture. A total of about 100 students/faculty members participated and discussed their research enthusiastically.



Society and Community Outreach Activities

Community Programs

We communicate the outcomes of the University's educational and research activities and give back to the community, with the aim to promote and spread the arts and sciences, as well as promote excellent research findings.

SOKENDAI Outreach Activities

- **Collaboration with KOSEN via fabrication of compact accelerators by students**
OTANI Masashi (Associate professor, Accelerator Science)
- **"Tan-Q" Science education and outreach program using compact cosmic-ray detector**
MIHARA Satoshi (Professor, Particle and Nuclear Physics)
- **Outreach Lecture 2025 "Challenging the Unknown: Cutting-edge Researches Spoken by Young Researchers"**
SAKAMOTO Minoru (Professor, Japanese History)



Challenging the Unknown

"Yokoko Academia" with Kanagawa Prefectural Yokosuka Senior High School

We supported the academic program, "Yokoko Academia" organized by Kanagawa Prefectural Yokosuka Senior High School to contribute to local educational institutes and foster future generations. The school is designated as a Super Science High School by the Ministry of Education, Culture, Sports, Science and Technology.

JSPS Summer Program

The JSPS Summer Program is carried out in partnership with the Japan Society for the Promotion of Science. The program provides opportunities for young pre- and post-doctoral researchers from North America and Europe to take part in an orientation program on Japanese culture and language, and to conduct research under the guidance of host researchers at a Japanese university or research institute for a period of two months during the summer.



Orientation program in June, 2025

In FY2025,
95 fellows
participated in
this program

- USA 15
- Canada 18
- UK 15
- France 15
- Germany 19
- Sweden 13

(95 fellows)



Research report presentation in August, 2025

Press Release

<https://www.soken.ac.jp/en/news/?key=press>

Issued press releases primarily featuring the research achievements of our faculty and students, which subsequently received media coverage.

■ FY 2025 : 49cases

Research Center for Integrative Evolutionary Science

The only research center in Japan with “evolution” at its core

The Research Center for Integrative Evolutionary Science transcends the boundaries of traditional evolutionary biology by treating the temporal dynamics of organisms, ecosystems, societies, and information systems as “integrative evolutionary science,” and, from this broad perspective, promotes interdisciplinary research that explores the past, deepens understanding of the present, and extends to forecasting the future.



https://rcies.soken.ac.jp/index_en.html

Research Activities

- Exploring temporal change in life, society, and information through evolution
- Advancing Integrative Evolutionary Science from past and present understanding to future insight
- Creating cross-disciplinary knowledge from evolutionary perspectives

Training Future Leaders, Sharing Knowledge

- Training the next generation of evolutionary biologists
- Fostering globally minded researchers through domestic and international collaboration
- Sharing evolutionary perspectives to create academic and social value



Director, Research Center for Integrative Evolutionary Science
Prof. IRIE Naoki

The Research Center for Integrative Evolutionary Science is a unique research hub in Japan that places evolution at its core. All organisms, including humans, share a common ancestor about 3.8 billion years ago, and since then life on this planet has followed diverse evolutionary trajectories. Evolution is not merely a phenomenon of the past; it is constantly reshaping the structure and behavior of living systems today. Our Center extends the concept of “evolution” beyond individual organisms and populations to include the temporal development of societies, civilizations, and information systems arising from interactions among organisms. In this way, it serves as a rare academic hub that seeks to uncover the universal principles and regularities underlying these phenomena. Since 2026, under our new slogan “History of Life, beyond,” our mission has been to develop evolutionary studies into a field that also offers perspectives on the future, not just the past and present. By critically and creatively interpreting the dynamics of life and of societies and civilizations as its products from the perspective of “integrative evolution,” we aim to scientifically envision the diverse futures that may emerge.

The Center for Educational Planning and Development (CEPD)

The Center for Educational Planning and Development (CEPD) advances cross-program initiatives encompassing the planning and implementation of university-wide education, student co-creation activities, and student support, as well as institutional research and analysis related to education and efforts to attract highly qualified incoming students. Through these activities, the Center contributes to the University's mission of cultivating doctoral-level professionals endowed with "advanced specialties and expertise, broad perspective, and international competitiveness."

In April 2025, the Center established a new Section for Co-creation Support, thereby expanding into a four-section structure together with the Educational Development Section, the Institutional Research (IR) and Planning Section, and the Human Resource Development Section, significantly broadening the scope of its activities. Furthermore, in October 2025, the Center launched a Tokyo Office to strengthen support systems for collaborative activities among students and faculty members.

Educational Development Section

This section is responsible for implementing university-wide educational programs, including the Freshman Course for new students, international internships, career seminars, and job-based internships. It also supports the delivery of inter-University education programs and international collaborative degree programs. In addition, the section organizes faculty development (FD) initiatives and individual consultations for faculty members to enhance educational quality. To attract outstanding applicants, it also supports the SOKENDAI Alumni Ambassador (SAA) program.



Institutional Research (IR) and Planning Section

Through the administration of student surveys, this section analyzes educational effectiveness and provides feedback to improve teaching and learning practices. It has also developed and operates an interdisciplinary researcher and syllabus search system to help students broaden their academic interests. Moreover, the section conducts research performance analyses based on publication databases and offers staff development (SD) training programs.

Human Resource Development Section

In collaboration with the Institute of Statistical Mathematics, this section promotes a program to cultivate "data scientist-type (DS-type) researchers" capable of advancing data-driven research. The program employs postdoctoral researchers at IURLs who engage in joint research with faculty members of the Institute of Statistical Mathematics. Its aim is to foster doctoral-level professionals who possess not only expertise in their specialized fields but also strong competencies in data science.

Co-creation Support Section (Tokyo Office "Co-creation Studio")

This section promotes a wide range of initiatives that connect students beyond their programs with peers and faculty from other institutions and universities, as well as with industry and society at large. Its activities include the World Café, where students engage in thematic discussions; SOKENDAI Talks, where students outreach their research to society; and SOKENDAI Collabo, which facilitates interaction with industry professionals. It also organizes training of atmospheric balloon experiments conducted by ISAS/JAXA in Taiki, Hokkaido.

In addition, the section administers the SOKENDAI Special Researcher Program with support from JST to provide financial assistance to students. For career development, under a comprehensive partnership agreement with Acaric Co., Ltd., it offers employment consultations, career seminars, and entrepreneurial roundtable discussions. To further promote student interaction, it also organizes SOKENDAI NETWORKING events.

S O K E N D A I
KYOSO STUDIO Tokyo



<https://kyoso.soken.ac.jp/>

The Center for Academic Information Services

This Center was established to aim at effective management of academic information in SOKENDAI. Based on secure and resilient information infrastructure, it provides various academic information services to researchers and

researchers-in-future who are both users and creators of academic information, and supports education, research and administration in SOKENDAI.

Division of Information Services and Technology

Cooperating with the affiliated research institutes and museums, this division manages core information facilities and operates information systems located at the Hayama Campus.

[For inquiries or information]

Academic Information Service Office

TEL : 81-46-858-1587, 1588

FAX : 81-46-858-1607

E-mail : istc.jimu@ml.soken.ac.jp

Hayama Library

Hayama Library gathers, organizes and releases various academic materials to provide high-level research and education and to pioneer advanced academic fields.

Hayama Library is open around-the-clock to the faculty and students at the Hayama Campus for reading and borrowing.

It collects and makes available standard references and books that can be used in all program, as well as specialized books and journals related to studies in cutting-edge and/or interdisciplinary research fields. Image and video documentation materials are available through in-house facilities.

In addition, Hayama Library offers SOKENDAI Institutional Repository, which allows free online access to doctoral dissertations and book/ journal publications at the University, as well as academic papers published by the faculty and students at the Hayama Campus.

The Library also provides database services, including OPAC (Online Public Access Catalog) for books and journals held by the Library.

These books and databases are also available to the general public. The venue effectively functions both as a place to collect research resources and a studying space. SOKENDAI staff and neighborhood residents can borrow books belonging to Kanagawa Prefectural Library (KL-NET Service). Furthermore, since 2015, it has been serving as a service counter of the National Diet Library to enable users to browse digital materials belonging to the National Diet Library.



Number of academic materials available at the Library

As of April 1, 2026

- Book** : (Japanese) approx.22,600 titles
(Non-Japanese) approx.24,500 titles
- Journal** : (Japanese) approx.140 titles
(Non-Japanese) approx.330 titles
- E-book** : approx.169,300 titles
- E-journal** : approx.5,500 titles
- Institutional Repository** : approx.5,760 titles

University Library

The University Library consists of the Hayama Library and IURI libraries. The University Library gathers, organizes, and accumulates electronic materials. Under close cooperation with the Hayama Library and IURI libraries, the University Library aims to promote the education / research activities by performing required activities for the facilitation of the use of academic information. It offers a large number of e-journals and e-books so that faculty and graduate students of IURIs dotted around the country can use these materials in common. In addition, the university introduces and offers the world's largest bibliographic / citation database.

Electronic Journals

<https://www.lib.soken.ac.jp>

BioOne / JSTOR / Science Direct / Springer-LINK / Wiley-Blackwell / GeoScienceWorld / Scopus (Document/reference database search service)

※ In addition to the above, electronic journals for internal use at the Hayama Campus are available.

[For inquiries or information]

University Library

TEL : 81-46-858-1528, 1540

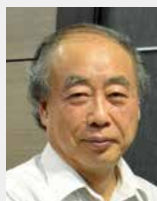
FAX : 81-46-858-1607

E-mail : lib@ml.soken.ac.jp

Nobel Prize Laureates from SOKENDAI

Nobel Prize in Physics

Professor Emeritus, School of High Energy Accelerator Science



The 2008

for the discovery of the origin of the broken symmetry which predicts the existence of at least three families of quarks in nature

KOBAYASHI Makoto

Professor Emeritus, SOKENDAI / Honorary Professor Emeritus, High Energy Accelerator Research Organization(KEK)

1999.4-2004.3 Professor, School of Mathematical and Physical Science
2004.4-2006.3 Professor, School of High Energy Accelerator Science
2003.4-2004.4 Chair, Department of Particle and Nuclear Physics
2008 Order of Culture

Nobel Prize in Physiology or Medicine

Professor Emeritus, School of Life Science



The 2016

for his discoveries of mechanisms for autophagy

OHSUMI Yoshinori

Professor Emeritus, SOKENDAI / National Institute for Basic Biology

1996.10-2009.3 Professor, School of Life Science
2008. 4-2009.3 Dean, School of Life Science
2006 Japan Academy Prize
2016 Order of Culture

[Recipients of Award]

Orders and Medals of Honor

Recipients since 2017; job title and affiliation at time of award

Name	Affiliation	Prize
SUDO Ken'ichi (Professor Emeritus)	Dept. of Regional Studies	The Order of the Sacred Treasure, Gold Rays with Neck Ribbon (2025)
KOMATSU Kazuhiko (Professor Emeritus)	Dept. of Japanese Studies	Order of Culture (2025)
GOJOBORI Takashi (Professor Emeritus)	Dept. of Genetics	The Order of the Sacred Treasure, Gold Rays with Neck Ribbon (2025)
NISHI Nobuyuki (Professor Emeritus)	Dept. of Structural Molecular Science	The Order of the Sacred Treasure, Gold Rays with Neck Ribbon (2025)
TAKII Kazuhiro (Professor)	Japanese Studies	Medal with Purple Ribbon (2024)
OKAWA Akifumi (Professor Emeritus)	Dept. of Evolutionary Studies of Biosystems	The Order of the Sacred Treasure, Gold Rays with Neck Ribbon (2024)
NEGISHI Masamitsu (Professor Emeritus)	Dept. of Informatics	The Order of the Sacred Treasure, Gold Rays with Neck Ribbon (2024)
WATANABE Yasuaki (Professor)	Japanese Literature	Medal with Purple Ribbon (2023)
YAMADA Sakue (Professor Emeritus)	Dept. of Particle and Nuclear Physics	The Order of the Sacred Treasure, Gold Rays with Neck Ribbon (2022)
IYE Masanori (Professor Emeritus)	Dept. of Astronomical Science	The Order of the Sacred Treasure, Gold and Silver Star (2022)
ARIKAWA Kentaro (Professor)	Research Center for Integrative Evolutionary Science	Medal with Purple Ribbon (2022)
HASEBE Mitsuyasu (Professor)	Dept. of Basic Biology	Medal with Purple Ribbon (2022)
OHMORI Kenji (Professor)	Dept. of Functional Molecular Science	Medal with Purple Ribbon (2021)
KOMATSU Kazuhiko (Professors Emeritus)	Dept. of Japanese Studies	The Order of the Sacred Treasure, Gold and Silver Star (2020)
NAGAMINE Kanetada (Processors Emeritus)	Dept. of Particle and Nuclear Physics	The Order of the Sacred Treasure, Gold Rays with Neck Ribbon (2020)
KODAIRA Keiichi (Professor Emeritus, Former President)	Dept. of Astronomical Science	The Order of the Sacred Treasure, Gold and Silver Star (2017)
KAWAI Maki (Professor)	Dept. of Functional Molecular Science	Medal with Purple Ribbon (2017)

Person of Cultural Merit

Name	Affiliation	Research Theme
KONAGAYA Yuki (Professor Emeritus)	Dept. of Regional Studies	Cultural anthropology (2025)
AGATA Kiyokazau (Director General)	Basic Biology	Developmental biology (2023)
ISHIGE Naomichi (Professor Emeritus)	Dept. of Comparative Studies	Cultural anthropology (2021)
KAWAI Maki (Director General)	Dept. of Functional Molecular Science	Surface science (2021)
SUZUKI Atsuto (Professor Emeritus)	Dept. of Particle and Nuclear Physics	Particle physics (2021)
HOTTA Yoshiki (Professor Emeritus)	Dept. of Genetics	Genetics(2020)
INOKI Takenori (Professor Emeritus)	Dept. of Japanese Studies	Economy (2019)

Japan Academy Prize

Name	Affiliation	Year	Subject
MIYAZAKI Satoshi (Professor)	Astronomical Science	2024	Pioneering and Promoting Cosmological Research Using Gravitational Lensing Effects
KAWAI Maki (Professor)	Dept. of Functional Molecular Science	2020	Single Molecule Spectroscopy Elucidating Chemical Reactions at Solid Surfaces
KITSUREGAWA Masaru (Professor)	Dept. of Informatics	2020	Pioneering Research in the Theory and Application of Large-Scale High-performance Database Systems
TSUNETA Saku (Professor)	Dept. of Astronomical Science	2019	Studies of Solar Magnetohydrodynamic Phenomena through Satellite Observations
NAGAMINE Kanetada (Professor Emeritus)	Dept. of Materials Structure Science	2019	Exploration of Muon Radiography and its Application to Nondestructive Studies of Large-scale Matters
TAKASAKI Fumihiko (Professor Emeritus)	Dept. of Particle and Nuclear Physics	2017	Studies of CP Violation in the B-Meson System

■ Japan Academy Medal Prize

Name	Affiliation	Year	Subject
KOIBUCHI Michihiro (Associate Professor)	Dept. of Informatics	2020	Pioneering Research on Introducing Randomness for Interconnection Networks on Parallel Computer Systems
ISHIZAKI Akihito (Professor)	Dept. of Structural Molecular Science	2019	Theoretical Development of Quantum Dissipative Dynamics and Its Application to Primary Processes of Photosynthesis

■ JSPS Prize

Name	Affiliation	Year	Research Theme
KATAOKA Mai (Associate Professor)	Japanese Studies	2025	Research on the Translation, Editing and Publishing Processes of Modern Japanese Literature, and the Reception and Dissemination of that Literature in the English-speaking World
KANEKO Megumi (Professor)	Informatics	2025	Research and Development to Create Energy Efficient and Smart Next-Generation Wireless Communication Systems
MURAYAMA Yasuto (Associate Professor)	Genetics	2024	Biochemical Study of the Molecular Basis Ensuring Faithful Chromosome Segregation
OHTSUKI Hisashi (Associate Professor)	Integrative Evolutionary Science	2023	Theoretical Study on Evolutionary Origin of Human Sociality

■ JSPS Ikushi Prize

Name	Affiliation	Year	Research Theme
SAKAMOTO Takahiro	Dept. of Evolutionary Studies of Biosystems	2022	Theoretical population genetics of natural selection
KARIYAZONO Shiho	Dept. of Evolutionary Studies of Biosystems	2017	The genetic basis and the biological role of fluorescent proteins in <i>Acropora</i> species

SOKENDAI Award

SOKENDAI Award is founded in Academic Year 2018 to commend the students who have accomplished their outstanding research and have been conferred their degrees with the excellent doctoral thesis in accordance with the principles and objectives of our university.

■ The recipients of the 15th SOKENDAI Award (September 26, 2025)

Name	Affiliation	Doctoral thesis
YOSHIDA Tomohiro	Dept. of Astronomical Science	Measuring Gas Surface Densities in Protoplanetary Disks via Line Pressure Broadening
SASAI Takeyuki	Dept. of Statistical Science	Non-Asymptotic Analysis of Robust and Sparse Linear Regression

■ The recipients of the 16th SOKENDAI Award (March 24, 2026)

Name	Affiliation	Doctoral thesis
IKEDA Ryota	Dept. of Astronomical Science	A Census of Spatially Resolved Star-forming Galaxies in the Distant Universe
NASU Tatsuhiro	Dept. of Fusion Science	Study of electron-scale turbulence characteristics and multi-scale turbulence interaction in high-temperature magnetic-confinement plasmas
TOKUNAGA Soma	Dept. of Evolutionary Studies of Biosystems	The adaptive significance of regional endothermy in fishes revealed by bioglogging
YUN HUISU	Japanese Language Sciences	The Miyako language within a broader Japonic context: A phonological history

Dean's Award

Dean's Award is founded in Academic Year 2018 to commend the students who have accomplished their outstanding research in the Graduate School, and have been conferred their degrees with the excellent doctoral thesis.

■ The recipients of 2025 Autumn Dean's Award (September 26, 2025)

Name	Affiliation	Doctoral thesis
SHIBUYA Miwa	Dept. of Regional Studies	Ethnography of one woman living alone with dementia with a focus on her experiences of Living with dementia and relationships: A methodological examination of anthropology of illness
WANG ZIQIN	Dept. of Japanese Studies	Visiting Chinese Painters in Edo-Period Japan and Their Reception: A Study from the <i>Nanga</i> Perspective
CHOU, CHIEN YU	Dept. of Particle and Nuclear Physics	Lefschetz Thimble Simulations in Matrix Models and Quantum Cosmology
ISLAM MOUTUSHI	Dept. of Genetics	Advancing the utility of AID2-based conditional protein knockdown
NAKAMURA Rinko	Dept. of Basic Biology	Intrinsically disordered region of histone methyltransferase Ctr4 regulates its enzymatic activity in fission yeast

■ The recipients of 2026 Spring Dean's Award (March 24, 2026)

Name	Affiliation	Doctoral thesis
NOZAWA Hitoshi	Dept. of Space and Astronomical Science	Unveiling the Lunar Magma Ascent Process with Indigenous Volatiles via Radar Data Analysis
NISHIMORI Sakiko	Dept. of Particle and Nuclear Physics	Study of neutral hadron yields by 31 GeV/c proton + 90 cm carbon interactions for precise neutrino flux prediction in long baseline neutrino oscillation experiments
HAYASHI Aoi	Dept. of Informatics	Characterizing and harnessing complex quantum dynamics for quantum machine learning
ITO Toma	Dept. of Basic Biology	Design Principle of Information-Integration Structures in Biological Signaling Systems
GOTO Yujin	Dept. of Physiological Sciences	Selective enhancement of neural response consistency through self-organisation

[Academic Staff]

(As of May 1, 2026)

Category	Member of the Board	Professor	Associate Professor	Lecturer	Assistant Professor	Others	Secretariat	Total
President	1							1
Executive Director	2							2
Auditor	2							2
Vice President	(2)							(2)
Graduate Institute for Advanced Studies								
Anthropological Studies		21	19					40
Japanese Studies		13	4					17
Japanese History		14	16					30
Japanese Literature		11	8					19
Japanese Language Sciences		14	4					18
Informatics		28	15		14			57
Statistical Science		22	20		4			46
Particle and Nuclear		27	36	15	20			98
Accelerator Science		51	40	21	45			157
Astronomical Science		26	37	5	45			113
Fusion Science		20	24		18			62
Space and Astronautical Science		21	40		14			75
Molecular Science		15	11		21			47
Materials Structure Science		25	18	3	21			67
Global Environmental Studies		13	8					21
Polar Science		16	15		15			46
Basic Biology		15	16		26			57
Physiological Sciences		16	10		25			51
Genetics		18	10		13			41
Integrative Evolutionary Science		(6)	(5)	(3)	(3)			(17)
Research Center for Integrative Evolutionary Science		6	5	3	3			17
The Center for Education Planning and Development	(1)		1					1 (1)
The Center for Academic Information Services	(1)	1				1	(1)	2 (2)
Secretariat etc.							39	39
Total	5 (4)	393 (6)	357 (5)	47 (3)	284 (3)	1	39 (1)	1126 (22)

※ The number of staff in parentheses indicates those who concurrently work in other section [not included in the total].

Faculty Directory

A faculty directory is available on our website.

Faculty Directory

<https://www.soken.ac.jp/en/faculty-directory/index.html>



[Students]

(As of May 1, 2026)

	1st year		2nd Year		3rd Year (1st Year**)		4th Year (2nd Year**)		5th Year (3rd Year**)		Total							
	Female	Int'l Students	Female	Int'l Students	Female	Int'l Students	Female	Int'l Students	Female	Int'l Students	Female	Int'l Students						
Graduate Institute for Advanced Studies	79	19	22	86	26	22	139	43	32	101	26	24	79	28	16	484	142	116
Anthropological Studies	/	/	/	/	/	/	4	3	0	3	3	1	6	3	0	13	9	1
Japanese Studies	/	/	/	/	/	/	2	2	0	1	0	0	4	4	2	7	6	2
Japanese History	/	/	/	/	/	/	5	2	2	3	2	1	2	1	0	10	5	3
Japanese Literature	/	/	/	/	/	/	0	0	0	1	1	0	2	1	0	3	2	0
Japanese Language Sciences	/	/	/	/	/	/	5	2	2	8	1	3	6	4	2	19	7	7
Informatics	13	1	5	16	5	8	23	4	8	21	0	5	8	2	2	81	12	28
Statistical Science	2	0	0	3	0	0	4	0	1	4	0	2	9	0	0	22	0	3
Particle and Nuclear Physics	3	0	0	5	2	2	11	2	3	9	3	2	3	0	3	31	7	10
Accelerator Science	3	0	2	5	1	2	2	0	1	2	1	0	1	0	0	13	2	5
Astronomical Science	7	1	1	7	1	1	9	3	2	8	2	2	3	1	2	34	8	8
Fusion Science	3	0	1	3	0	2	5	1	2	3	0	0	1	0	1	15	1	6
Space and Astronautical Science	7	2	0	5	0	0	10	1	0	5	1	0	7	0	1	34	4	1
Molecular Science	4	0	0	8	1	0	8	0	2	8	1	4	5	2	1	33	4	7
Materials Structure Science	4	1	2	0	0	0	2	0	1	0	0	0	0	0	0	6	1	3
Global Environmental Studies	/	/	/	/	/	/	6	4	1	1	1	1	6	4	0	13	9	2
Polar Science	5	1	0	6	2	0	5	4	0	3	2	0	4	1	0	23	10	0
Basic Biology	3	1	2	7	4	1	11	4	2	9	2	0	5	2	1	35	13	6
Physiological Sciences	10	4	5	7	6	2	10	6	2	1	0	0	1	1	1	29	17	10
Genetics	11	6	4	10	3	4	11	3	2	7	3	3	3	1	0	42	16	13
Integrative Evolutionary Science	4	2	0	4	1	0	6	2	1	4	3	0	3	1	0	21	9	1
School of Cultural and Social Studies*	0	0	0	0	0	0	0	0	0	0	0	0	16	9	5	16	9	5
Regional Studies	/	/	/	/	/	/	0	0	0	0	0	0	4	2	1	4	2	1
Comparative Studies	/	/	/	/	/	/	0	0	0	0	0	0	2	1	0	2	1	0
Japanese Studies	/	/	/	/	/	/	0	0	0	0	0	0	5	4	4	5	4	4
Japanese History	/	/	/	/	/	/	0	0	0	0	0	0	4	2	0	4	2	0
Japanese Literature	/	/	/	/	/	/	0	0	0	0	0	0	1	0	0	1	0	0
School of Physical Sciences*	0	0	0	0	0	0	0	0	0	0	0	0	16	1	1	16	1	1
Structural Molecular Science	0	0	0	0	0	0	0	0	0	0	0	0	1	0	0	1	0	0
Functional Molecular Science	0	0	0	0	0	0	0	0	0	0	0	0	3	0	0	3	0	0
Astronomical Science	0	0	0	0	0	0	0	0	0	0	0	0	6	1	0	6	1	0
Fusion Science	0	0	0	0	0	0	0	0	0	0	0	0	3	0	1	3	0	1
Space and Astronautical Science	0	0	0	0	0	0	0	0	0	0	0	0	3	0	0	3	0	0
School of High Energy Accelerator Science*	0	0	0	0	0	0	0	0	0	3	0	3	14	4	5	17	4	8
Accelerator Science	0	0	0	0	0	0	0	0	0	1	0	1	5	3	2	6	3	3
Materials Structure Science	0	0	0	0	0	0	0	0	0	0	0	0	2	1	1	2	1	1
Particle and Nuclear Physics	0	0	0	0	0	0	0	0	0	2	0	2	7	0	2	9	0	4
School of Multidisciplinary Sciences*	0	0	0	0	0	0	0	0	0	5	1	4	24	1	5	29	2	9
Statistical Science	0	0	0	0	0	0	0	0	0	0	0	0	5	0	0	5	0	0
Polar Science	0	0	0	0	0	0	0	0	0	0	0	0	3	0	0	3	0	0
Informatics	0	0	0	0	0	0	0	0	0	5	1	4	16	1	5	21	2	9
School of Life Science*	0	0	0	0	0	0	0	0	0	4	3	3	20	8	12	24	11	15
Genetics	0	0	0	0	0	0	0	0	0	2	1	2	13	5	9	15	6	11
Basic Biology	0	0	0	0	0	0	0	0	0	1	1	0	3	0	2	4	1	2
Physiological Sciences	0	0	0	0	0	0	0	0	0	1	1	1	4	3	1	5	4	2
School of Advanced Sciences*	0	0	0	0	0	0	0	0	0	0	0	0	6	5	0	6	5	0
Evolutionary Studies of Biosystems	0	0	0	0	0	0	0	0	0	0	0	0	6	5	0	6	5	0
Total	79	19	22	86	26	22	139	43	32	113	30	34	175	56	44	592	174	154

※ The number of female students and international students is included in the total.

* These schools stopped accepting applications on March 31, 2023.

** The year of a 3-year doctoral program

DATA

[Applicants and Enrollments]

(As of April 1, 2026)

Program	Quota (Number of students to be accepted)		Applicant		Passer		Admitted Students		Background							
	5-year	3-year	5-year	3-year	5-year	3-year	5-year	3-year	Gender				International Students		Jobholder	
									Male		Female		5-year	3-year	5-year	3-year
Graduate Institute for Advanced Studies	58	62	147	85	78	52	54	47	40	29	14	18	6	8	1	14
Anthropological Studies	/	(4)	/	9	/	4	/	4	/	1	/	3	/	0	/	2
Japanese Studies	/	(3)	/	7	/	2	/	2	/	0	/	2	/	0	/	1
Japanese History	/	(3)	/	9	/	5	/	5	/	3	/	2	/	2	/	2
Japanese Literature	/	(2)	/	3	/	0	/	0	/	0	/	0	/	0	/	0
Japanese Language Sciences	/	(3)	/	10	/	5	/	5	/	3	/	2	/	2	/	0
Informatics	(8)	(12)	13	11	6	9	6	8	5	6	1	2	2	4	1	3
Statistical Science	(2)	(6)	5	2	4	2	2	2	2	2	0	0	0	0	0	1
Particle and Nuclear Physics	(6)	(1)	27	1	15	1	3	1	3	1	0	0	0	0	0	1
Accelerator Science	(2)	(1)	6	1	3	1	1	1	1	1	0	0	0	0	0	0
Astronomical Science	(5)	(1)	22	6	9	2	6	1	5	0	1	1	0	0	0	0
Fusion Science	(3)	(2)	3	1	1	1	1	1	1	1	0	0	0	0	0	1
Space and Astronautical Science	(4)	(3)	15	8	7	6	6	4	4	3	2	1	0	0	0	0
Molecular Science	(7)	(5)	8	1	5	1	4	1	4	1	0	0	0	0	0	0
Materials Structure Science	(2)	(1)	2	0	2	0	2	0	1	0	1	0	0	0	0	0
Global Environmental Studies	/	(2)	/	6	/	6	/	5	/	2	/	3	/	0	/	3
Polar Science	(2)	(1)	7	1	5	1	5	1	4	1	1	0	0	0	0	0
Basic Biology	(5)	(3)	5	0	2	0	1	0	1	0	0	0	0	0	0	0
Physiological Sciences	(3)	(6)	8	2	6	2	6	2	3	1	3	1	3	0	0	0
Genetics	(6)	(2)	13	7	9	4	7	4	4	3	3	1	1	0	0	0
Integrative Evolutionary Science	(3)	(1)	13	0	4	0	4	0	2	0	2	0	0	0	0	0

Admission of the 2026

Japanese National Universities

Chiba University	2
Ehime University	1
Fukushima University	1
Hiroshima University	2
Hokkaido University	2
Ibaraki University	1
Institute of Science Tokyo	1
Kagawa University	1
Kobe University	1
Kyoto University	9
Muroran Institute of Technology	1
Nagasaki University	1
Nagoya University	5
Nara Institute of Science and Technology	2
Niigata University	1
Okayama University	1
Saga University	1
Shimane University	1
Shinshu University	1
Shizuoka University	2
The University of Osaka	2
The University of Tokyo	4
Tohoku University	4
Tokushima University	1
Tokyo Gakugei University	1
Tokyo University of Agriculture and Technology	2
Tokyo University of Foreign Studies	2
Tokyo University of Marine Science and Technology	1
Tottori University	1
University of Miyazaki	1
Yokohama National University	1

Japanese Public Universities

Osaka City University	1
Prefectural University of Hiroshima	1
The University of Shiga Prefecture	1
Tokyo Metropolitan University	1
Yokohama City University	1

Japanese Private Universities

Aichi Institute of Technology	1
Aoyama Gakuin University	1
Chuo University	2
Hosei University	1
International Christian University	1
Kanagawa University	1
Kansai University	1
Keio University	2
Kitasato University	1
Kyoto Sangyo University	1
Meiji University	1
Meijo University	2
Nanzan University	1
Nihon University	3
Shibaura Institute of Technology	1
Tokyo Denki University	1
Tokyo University of Agriculture	1
Tokyo University of Science	4

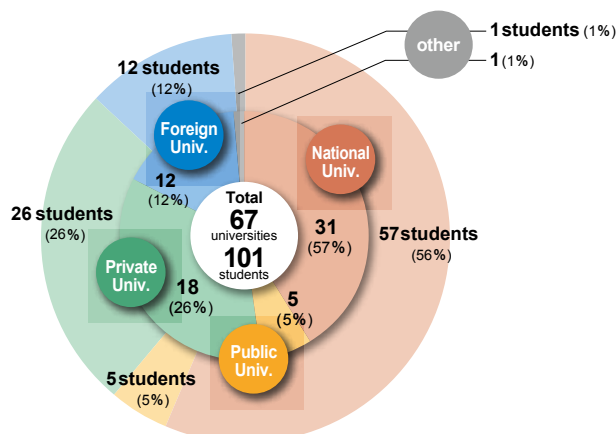
Foreign Universities

École Normale Supérieure de Lyon	1
Heilongjiang University	1
Indonesia International Institute for Life Sciences	1
National Taiwan University	1
North South University	1
Pusan National University	1
Shandong University of Science and Technology	1
Shanghai Jiao Tong University	1
Silk Road International University of Tourism and Cultural Heritage	1
University of Lisbon	1
Xidian University	1
Zhejiang University	1

Others

National Institute of Technology, Ichinoseki College	1
--	---

DATA



[Degrees Awarded]

	For the period of 1991~2020	2021	2022	2023	2024	2025	Total
Doctor of Philosophy	2256 [168] (269)	82 [4] (3)	97 [12] (5)	80 [8] (10)	72 [4] (3)	95 [8] (2)	2682 [204] (292)

※1 [] : The number of those who were granted the Ph.D. within a specified time after leaving the university.
 ※2 () : The number of those who were granted the Ph.D. by way of Dissertation (not included in the total).

[Career Tracking / Data of the 2025]

Universities / Research institutes, etc.

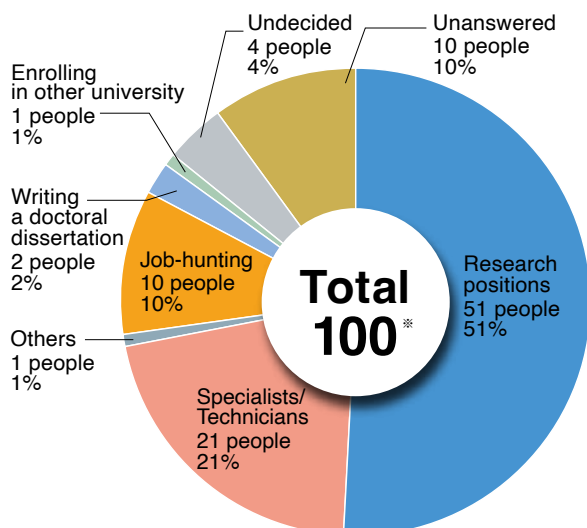
The University of Tokyo
 Institute of Science Tokyo
 Kanazawa University
 Nagoya University
 Kyoto University
 Hiroshima University
 The Graduate University for Advanced Studies, SOKENDAI
 Iwate Prefectural University
 Ibaraki Prefectural Tsukuba School of Nursing
 Seikei University
 Hosei University
 Kogakuin University
 Tokyo University of Social Welfare
 Jissen Women's University
 Okinawa Institute of Science and Technology (OIST)
 ZEN University
 VNU University of Engineering and Technology
 University of Kelaniya
 University of Science and Technology of China
 Hawai'i Institute of Marine Biology, University of Hawai'i at Mānoa
 Conservatoire National des Arts et Métiers (CNAM)

Leiden Observatory
 Institut Curie
 Asia Pacific Center for Theoretical Physics (APCTP)
 ASIAA/Institute of Astronomy & Astrophysics, Academia Sinica
 National Institute for Japanese Language and Linguistics
 National Institute of Informatics
 The Institute of Statistical Mathematics
 High Energy Accelerator Research Organization (KEK)
 National Astronomical Observatory of Japan
 National Institute for Fusion Science
 National Institute for Basic Biology
 National Institute for Physiological Sciences
 National Institute of Genetics
 National Institute of Maritime, Port and Aviation Technology
 Fisheries Resources Institute, Japan Fisheries Research and Education Agency (FRA)
 National Institute of Advanced Industrial Science and Technology
 RIKEN
 RIKEN Center for Brain Science
 National Institutes for Quantum Science and Technology
 Ministry of Land, Infrastructure, Transport and Tourism
 Public Elementary School (Suita City Board of Education)

Private companies / Public service corporation

AGC Inc.
 Lazuli Inc.
 NEC Network and Sensor Systems, Ltd.
 Tesla Japan
 Astellas Pharma Inc.
 AdvanceSoft Corporation
 Applied Materials Japan, Inc.
 Eisai Co., Ltd.
 SanDisk Limited Liability Company
 TOYOTA MOTOR CORPORATION
 Panasonic Holdings Corporation
 Metagen Therapeutics, Inc.
 Shionogi & Co., Ltd.
 IDAJ Co., LTD.

Eukarya Co., Ltd.
 Synspec Inc.
 Systems Engineering Consultants Co.,LTD.
 Bridgestone Corporation
 FLECT Co.,Ltd.
 Resonac Corporation
 WORLD INTEC CO., LTD.
 Advanced Telecommunications Research Institute
 International (ATR)
 Hitachi Solutions Technology, Ltd.
 Shanda Group Corp
 Nomura Securities Co.,Ltd.
 Other



※ Breakdown of the total

The number of those who completed a course and obtained a degree : 87
 The number of those who left the university after obtaining the credits required for completion of a course in the relevant academic year : 13

DATA

[International Exchange]

Number of International Students

(As of May 1, 2026)

	1st Year			2nd Year			3rd Year (1st Year**)			4th Year (2nd Year**)			5th Year (3rd Year**)			Total			Research Student		
	Female	MEXT		Female	MEXT		Female	MEXT		Female	MEXT		Female	MEXT		Female	MEXT		Female	MEXT	
Graduate Institute for Advanced Studies	22	6	13	22	8	10	32	8	4	24	4	3	16	7	4	116	33	34	7	4	2
Anthropological Studies										1	1					1	1	0	1	1	
Japanese Studies													2	2		2	2	0	3	2	
Japanese History							2	1		1	1					3	2	0			
Japanese Literature																0	0	0			
Japanese Language Sciences							2	2		3			2	1		7	3	0	1		1
Informatics	5		3	8	2	3	8			5			2	1	1	28	3	7			
Statistical Science							1			2						3	0	0			
Particle and Nuclear Physics				2	2		3	2		2			3		1	10	4	1			
Accelerator Science	2		1	2		2	1		1							5	0	4			
Astronomical Science	1		1	1		1	2		1	2		1	2	1	1	8	1	5	2	1	1
Fusion Science	1			2			2						1		1	6	0	1			
Space and Astronautical Science													1			1	0	0			
Molecular Science							2			4	1		1			7	1	0			
Materials Structure Science	2		2				1									3	0	2			
Global Environmental Studies							1	1		1	1	1				2	2	1			
Polar Science																0	0	0			
Basic Biology	2	1	2	1	1		2	1	1				1	1		6	4	3			
Physiological Sciences	5	2	2	2	2	2	2	1					1	1		10	6	4			
Genetics	4	3	2	4	1	2	2		1	3		1				13	4	6			
Integrative Evolutionary Science							1									1	0	0			
School of Cultural and Social Studies*	0	0	0	0	0	0	0	0	0	0	0	0	5	4	0	5	4	0	0	0	0
Regional Studies													1	1		1	1	0			
Comparative Studies																0	0	0			
Japanese Studies													4	3		4	3	0			
Japanese History																0	0	0			
Japanese Literature																0	0	0			
School of Physical Sciences*	0	0	0	0	0	0	0	0	0	0	0	0	1	0	0	1	0	0	0	0	0
Structural Molecular Science																0	0	0			
Functional Molecular Science																0	0	0			
Astronomical Science																0	0	0			
Fusion Science													1			1	0	0			
Space and Astronautical Science																0	0	0			
School of High Energy Accelerator Science*	0	0	0	0	0	0	0	0	0	3	0	2	5	2	4	8	2	6	0	0	0
Accelerator Science										1		1	2	1	2	3	1	3			
Materials Structure Science													1	1	1	1	1	1			
Particle and Nuclear Physics										2		1	2		1	4	0	2			
School of Multidisciplinary Sciences*	0	0	0	0	0	0	0	0	0	4	1	3	5	0	1	9	1	4	0	0	0
Statistical Science																0	0	0			
Polar Science																0	0	0			
Informatics										4	1	3	5		1	9	1	4			
School of Life Science*	0	0	0	0	0	0	0	0	0	3	2	1	12	4	5	15	6	6	0	0	0
Genetics										2	1	1	9	4	5	11	5	6			
Basic Biology													2			2	0	0			
Physiological Sciences										1	1		1			2	1	0			
School of Advanced Sciences*	0	0	0	0	0	0	0	0	0	0	0	0	0	0	0	0	0	0	0	0	0
Evolutionary Studies of Biosystems																0	0	0			
Total	22	6	13	22	8	10	32	8	4	34	7	9	44	17	14	154	46	50	7	4	2

※ 1 Based on the Guidelines for the Basic School Survey.

※ 2 The number of female students and MEXT scholarship students is included in the total.

* These schools stopped accepting applications on March 31, 2023.

** The year of a 3-year doctoral program

DATA

Number of International Students

(As of May 1, 2026)

Country or Region	1st Year			2nd Year			3rd Year (1st Year*)			4th Year (2nd Year*)			5th Year (3rd Year*)			Total			Research Student		
	Female	MEXT		Female	MEXT		Female	MEXT		Female	MEXT		Female	MEXT		Female	MEXT		Female	MEXT	
Asia	20	5	11	18	8	7	21	6	2	22	6	5	33	15	8	114	40	33	3	2	1
India	4	1	3	1	1	1	2		1				3	3	2	10	5	7			
Indonesia	3	1	1	2		2							2	1	1	7	2	4			
Sri Lanka										1		1				1	0	1			
Thailand										1		1	2		2	3	0	3			
Nepal													1		1	1	0	1			
Pakistan	2		2	2	1	2										4	1	4			
Philippines	2		2													2	0	2			
Viet Nam	3	1	3	1	1		3	1	1	2	1	2	2	2	2	11	6	8			
Malaysia																0	0	0	1	1	1
Mongolia				1	1	1										1	1	1			
Korea				1		1	2			1	1		2			6	1	1			
China	5	2		9	3		13	5		13	3	1	20	9		60	22	1	2	1	
Taiwan	1			1	1		1			4	1		1			8	2	0			
Africa	0	0	0	0	0	0	1	0	1	2	0	1	0	0	0	3	0	2	1	1	0
Algeria										2		1				2	0	1			
Egypt							1		1							1	0	1			
Madagascar																0	0	0	1	1	
Europe	1	1	1	1	0	0	6	1	0	9	1	2	8	2	4	25	5	7	1	0	1
Albania										1						1	0	0			
Ireland										1		1				1	0	1			
Kazakhstan	1	1	1				2	1		1		1	2	1	2	6	3	4			
Georgia													1			1	0	0			
Spain							1									1	0	0			
Denmark				1												1	0	0			
Germany							1			1			1		1	3	0	1			
France							1			4	1		4	1	1	9	2	1			
Portuguese							1			1						2	0	0			
Luxembourg																0	0	0	1		1
Middle East	0	0	0	0	0	0	1	0	1	0	0	0	0	0	0	1	0	1	1	1	0
Iran																0	0	0	1	1	
Turkey							1		1							1	0	1			
North America / Central America	1	0	1	2	0	2	0	0	0	1	0	1	1	0	0	5	0	4	0	0	0
USA				1		1				1		1				2	0	2			
Canada	1		1										1			2	0	1			
Mexico				1		1										1	0	1			
South America	0	0	0	1	0	1	3	1	0	0	0	0	2	0	2	6	1	3	1	0	0
Colombia							1	1								1	1	0			
Chile							1									1	0	0			
Brazil				1		1							2		2	3	0	3	1		
Peru							1									1	0	0			
Total	22	6	13	22	8	10	32	8	4	34	7	9	44	17	14	154	46	50	7	4	2

※ 1 Based on the Guidelines for the Basic School Survey.

※ 2 The number of female students and MEXT scholarship students is included in the total.

* The year of a 3-year doctoral program



[Academic Exchange and Collaboration Agreements]

SOKENDAI is promoting academic exchange and collaboration with other domestic and foreign universities through mutual agreements.

Academic Agreement with Foreign Universities

Date of Agreement	Country of Region	University / Institute
May 25, 2005	Republic of Korea	The University of Science and Technology
April 1, 2010	Thailand	Faculty of Science, Chulalongkorn University
March 29, 2011	Thailand	Faculty of Science, Kasetsart University
March 24, 2014	Malaysia	Faculty of Science, University of Malaya
February 8, 2017	Vietnam	Faculty of Biology, Vietnam National University of Science
February 15, 2017	Vietnam	Faculty of Animal Science, Vietnam National University of Agriculture
February 20, 2017	Vietnam	Institute of Archaeology, Vietnam Academy of Social Sciences
December 28, 2017	Taiwan	National Taiwan University
February 28, 2018	USA	College of Arts, Languages & Letters, University of Hawaii
August 28, 2018	Slovenia	Biotechnical Faculty, University of Ljubljana
September 5, 2018	Thailand	Vidyasirimedhi Institute of Science and Technology
October 9, 2018	Bangladesh	Faculty of Biological Sciences, Jahangirnagar University
February 13, 2019	Georgia	Georgian Technical University
November 7, 2019	Norway	UiT The Arctic University of Norway
November 8, 2019	France	École Centrale de Nantes
November 12, 2019	China	Lanzhou University
November 18, 2019	Republic of Korea	College of Medicine, Korea University
February 28, 2020	France	Université Paris-Saclay
May 20, 2020	China	School of Physical Science and Technology, Southwest Jiaotong University
July 17, 2020	Germany	Institute for Solid State Physics, Friedrich Schiller University Jena
July 20, 2020	Italy	Università di Bologna
December 8, 2021	France	Sorbonne Université
November 10, 2022	Republic of Korea	Pusan National University
March 7, 2023	Taiwan	National Yang Ming Chiao Tung University
June 8, 2023	Italy	University of Salerno
April 11, 2024	France	Aix-Marseille University
September 3, 2024	Taiwan	Fu Jen Catholic University
September 26, 2024	Thailand	Thaksin University
October 24, 2024	Thailand	Maharakham University
January 8, 2025	UK	University of Bradford
January 27, 2025	Mongolia	University of Mongolian Academy of Sciences
February 5, 2025	France	Nantes Université
February 26, 2025	Thailand	Faculty of Science, Chiang Mai University
April 8 2024	France	École pratique des Hautes Études

Academic Agreement with Domestic Universities

Effective Date of the Agreement	University / Institute
April 1, 1995	Ochanomizu University, Faculty of Human Life and Environmental Sciences
April 1, 1995	Nagoya University, Graduate School of Medicine
April 1, 1998	The University of Tokyo, Graduate School of Science
April 1, 1998	The University of Tokyo, Graduate School of Information Science and Technology
April 1, 2000	International Christian University, Graduate School of Arts and Sciences
April 1, 2005	Kyoto University, Graduate School of Asian and African Area Studies
April 1, 2005	The University of Osaka, Graduate School of Human Sciences
April 1, 2005	Kobe University, Graduate School of Intercultural Studies / Human Development and Environment
April 1, 2005	Chiba University, Graduate School of Humanities and Studies on Public Affairs
April 1, 2009	Japan Advanced Institute of Science and Technology, Graduate School of Advanced Science and Technology
April 1, 2010	Nagoya University, Graduate School of Engineering
April 1, 2010	Chiba University, Graduate School of Science and Engineering
April 1, 2015	Tsuda University, Graduate Program in Mathematics and Computer Science
April 1, 2017	Kyushu University, Graduate School of Pharmaceutical Sciences
April 1, 2018	Hosei University, Graduate School of Science and Engineering
June 1, 2019	The University of Osaka, Graduate School of Engineering
October 1, 2019	Nagoya University, Graduate School of Science / Engineering / Biogiricultural Sciences / Pharmaceutical Sciences
April 1, 2022	Kwansei Gakuin University, Graduate School of Science and Technology
October 1, 2023	Shizuoka University, Graduate School of Integrated Science and Technology / Medical Photonics / Science and Technology, Educational Division
October 1, 2024	Institute of Science Tokyo, School of Science/ Engineering/ Materials and Chemical Technology/ Computing/ Life Science and Technology/ Environment and Society
November 1, 2025	University of Tsukuba, Center for Education of Global Communication
April 1, 2028	Hitotsubashi University, Graduate School of Language and Society

Academic Agreement with Universities in Kanagawa

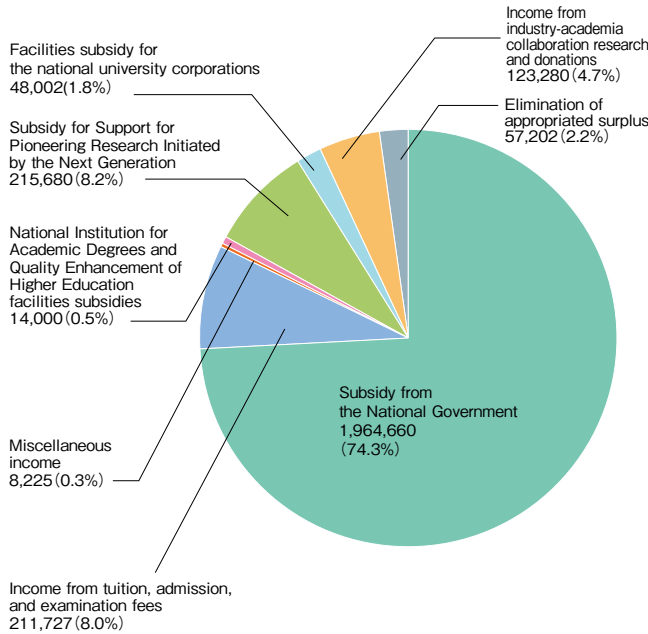
Effective Date of the Agreement	University	Graduate School	
January 10, 2001	Azabu University	Veterinary Science	
		Environmental Health	
	Kanagawa University	Law	
		Economics	
		Business Administration	
		Humanities	
		Science	
		Engineering	
		History and Folklore Studies	
		Human Science	
		Kanagawa Institute of Technology	Engineering
		Kanto Gakuin University	Humanities
	Economics		
	Law		
	Shonan Institute of Technology	Engineering	
		Engineering	
	Senshu University	Economics	
		Law	
		Humanities	
		Business Administration	
	Tsurumi University	Commerce	
		Literature	
	Toin University of Yokohama	Law	
		Engineering	
		Sport Sciences	
	Tokai University	Letters	
		Political Sciences	
		Economics	
		Law	
		Arts	
Physical Education			
Science			
Engineering			
Marine Science and Technology			
Health Studies			
Human Environmental Studies			
Nihon University	Bioresource Sciences		
	Veterinary Medicine		
Tokyo Polytechnic University	Engineering		
Yokohama City University	Medicine		
	Urban Social and Cultural Studies		
	Nanobioscience		
	Medical Life Science		
March 20, 2002	Yokohama National University	Engineering	
		Environment and Information Sciences	
		Education	
April 1, 2002	Institute of Science Tokyo	International Social Sciences	
		Urban Innovation	
April 1, 2002	Institute of Science Tokyo	Life Science and Technology	
		Humanities	
April 1, 2004	Ferris University	Global and Inter-cultural Studies	
		Music	
April 1, 2005	Meiji University	Agriculture	
		Institute of Information Security	
April 1, 2005	Institute of Information Security	Information Security	
April 1, 2007	Tokyo City University	Environmental and Information Studies	
September 21, 2025	Tokyo City University	Information and Data Sciences	
April 1, 2009	Shoin University	Business Administration	
April 1, 2009	Sagami Women's University	Nutritional Sciences	
April 1, 2021	Sagami Women's University	Social Entrepreneurship	
April 1, 2020	Aoyama Gakuin University	Science and Engineering	
April 1, 2013	Bunkyo University	Information and Communications	
April 1, 2015	Kamakura Women's University	Child Studies	
		St. Marianna University School of Medicine	
April 1, 2015	St. Marianna University School of Medicine	Medicine	
April 1, 2016	Showa Medical University	Health Sciences	
April 1, 2016	Joshi University of Art and Design	Art and Design	
April 1, 2018	Den-En Chofu University	Human Science	
April 1, 2019	Yokohama Soei University	Nursing	
January 10, 2001	Kitasato University	Science	
		Medical Sciences	
		Nursing	
		Pharmacy	
January 10, 2001	Kitasato University	Veterinary Medicine	
		Marine Biosciences	
		Infection Control Sciences	
April 1, 2026	Kitasato University	Frontire Engineering	

DATA

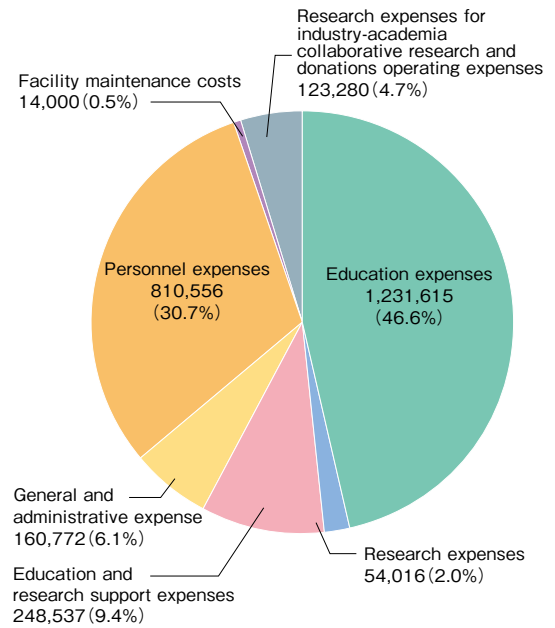
[FY2026 Income and Expenditures Budget]

(Yen, Thousand)

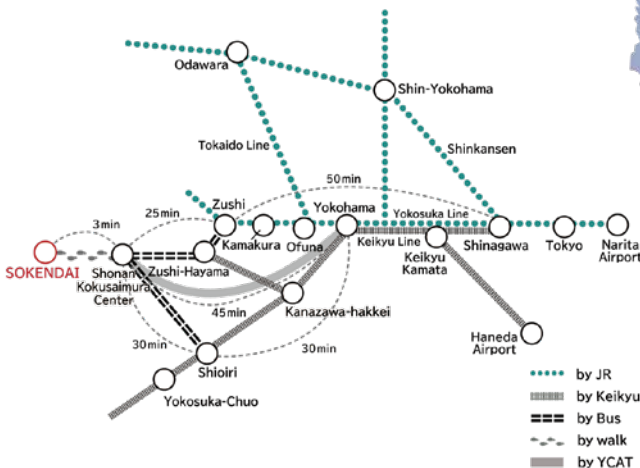
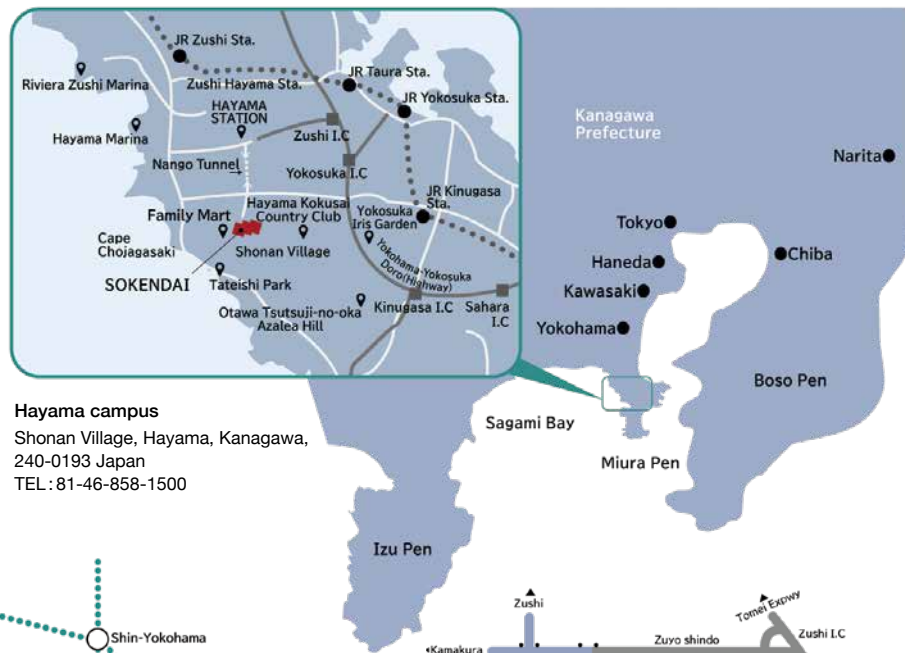
■ Total Budget Income 2,642,776



■ Total Expenditures Budget 2,642,776



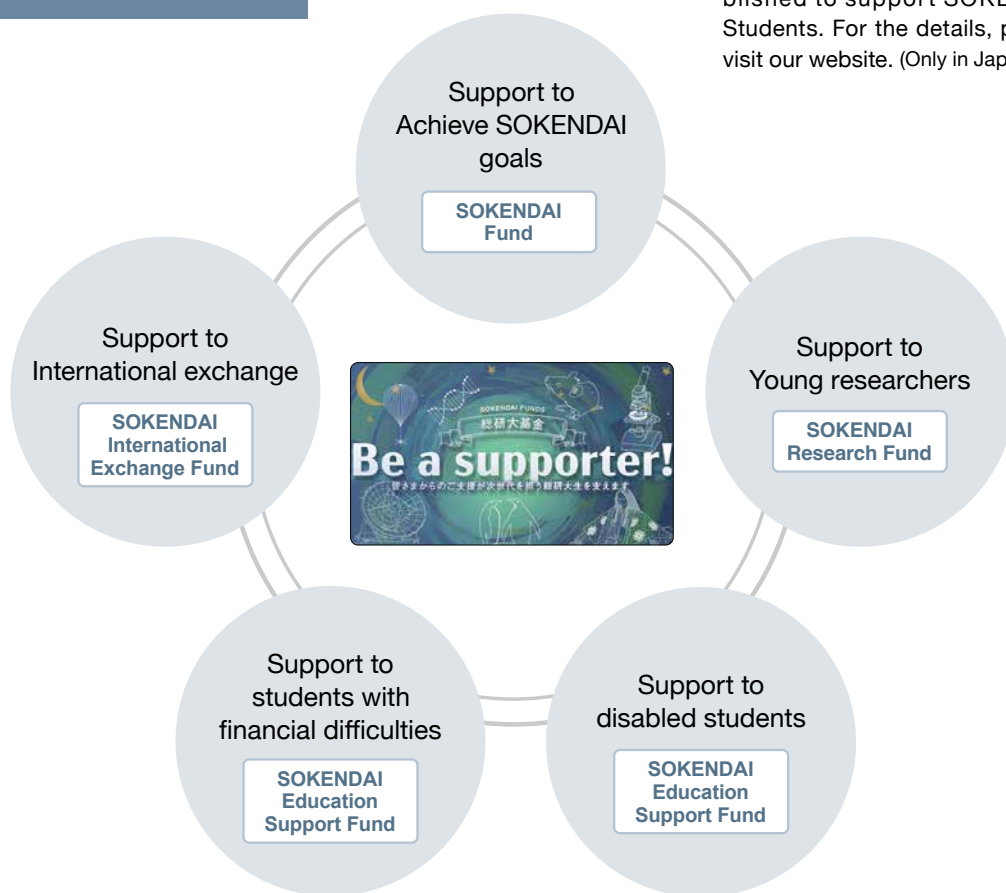
[ACCESS]



DATA

SOKENDAI Fund

SOKENDAI Fund has been established to support SOKENDAI Students. For the details, please visit our website. (Only in Japanese)



About Sokenkai Fund

<https://www.soken.ac.jp/donation/>



DATA

SOKENDAI Newsletter

SOKENDAI Newsletter covers ongoing activity information at the university such as various events in our campuses, research findings released to media, and awards.

You can find it online on our university website. (Japanese text only)



SOKENDAI Newsletter

<https://www.soken.ac.jp/outline/pr/publicity/newsletter/>



[logo]

SOKENDAI renewed our logo as we celebrate the 30th anniversary of the university's foundation in 2018. SOKENDAI represents a unique educational structure that provides intellectual knowledge at the highest standards. The ethos of the brand is mirrored through the visualization of a line 'Intelligence Connector' which symbolizes a platform for the multiple numbers of research centers across the world that form the diverse educational platform of SOKENDAI.



[Cover Image]

Knee pads for Mongolian wrestling

Collection of the National Museum of Ethnology
Object Number:H0216348

Shonan Village, Hayama,
Kanagawa 240-0193 Japan

www.soken.ac.jp/en



S O K E N D A I

2026-2027